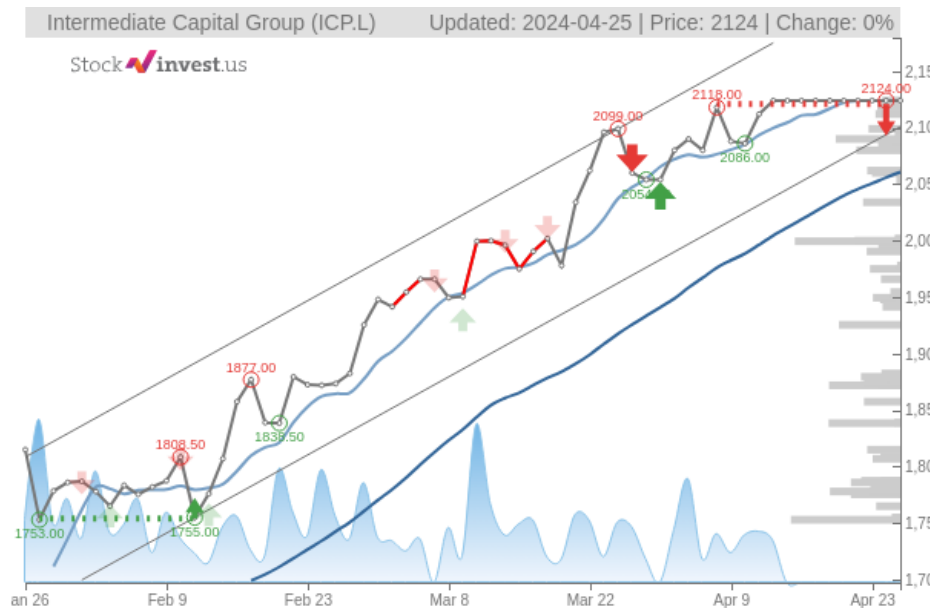


# Intermediate Capital Group (Thu, Apr 25, 2024)

Buy candidate since Jan 24, 2024

Gain 29.75%

StockInvest.us  
Gyneju st. 14, "ROCKIT"  
Vilnius, LT-01109  
Lithuania



score: **0**  
#/ 30092

Trend: Buy  
MV Long: Buy  
MV Short: Buy  
Pivot: Sell  
Volume: Sell  
MACD: Sell

## Tech commentaries:

No changes to the price of **Intermediate Capital Group** stock on the last trading day (Thursday, 25th Apr 2024). During the last trading day the stock fluctuated **0%** from a day low at **£2,124.00** to a day high of **£2,124.00**. The price has been going up and down for this period, and there has been a 0.57% gain for the last 2 weeks.

The stock lies in the lower part of a strong rising trend in the short term, and this may normally pose a very good buying opportunity. If the lower trend floor at **£2,100.79** is broken, it will firstly indicate a slower rate of rising, but may also be an early warning for a trend shift. Given the current short-term trend, the stock is expected to rise **23.71%** during the next 3 months and, with a 90% probability hold a price between **£2,598.87** and **£2,767.76** at the end of this 3-month period.

The **Intermediate Capital Group** stock holds buy signals from both short and long-term Moving Averages giving a positive forecast for the stock. Also, there is a general buy signal from the relation between the two signals where the short-term average is above the long-term average. On corrections down, there will be some support from the lines at **£2,124.00** and **£2,060.74**. A breakdown below any of these levels will issue sell signals. Some negative signals were issued as well, and these may have some influence on the near short-term development. A sell signal was issued from a pivot top point on **Wednesday, April 24, 2024**, and so far it has fallen 0%. Further fall is indicated until a new bottom pivot has been found. Furthermore, there is currently a sell signal from the 3 month Moving Average Convergence Divergence (MACD). Volume fell on the last day without any changes to the price. This does not cause any direct divergence but may be an early warning and a possible "turning point". The very low volume increases the risk and reduces the other technical signals issued.

On the downside, the stock finds support just below today's level from accumulated volume at **£1,999.50** and **£1,838.50**. There is no resistance from accumulated volume above today's level and given the right condition the stock may perform very well during the next couple of days.

In general the stock tends to have very controlled movements and therefore the general risk is considered very low. However, be aware of low or falling volume and make sure to keep an eye on the stock. During the last day, the stock moved **£0** between high and low, or **0%**. For the last week the stock has had daily average volatility of **0%**.

**Intermediate Capital Group** holds several positive signals, but we still don't find these to be enough for a buy candidate. At the current level, it should be considered as a hold candidate (hold or accumulate) in this position whilst awaiting further development.

Risk: **Low**

Evaluation: **Hold/Accumulate**

Disclaimer: StockInvest.us is a research service that provides financial data and technical analysis of stocks. All users should speak with their financial advisor before buying or selling any securities. Users should not base their investment decision upon "StockInvest.us". By using the site you agree and are held liable for your own investment decisions and agree to Terms of Use and Privacy Policy.