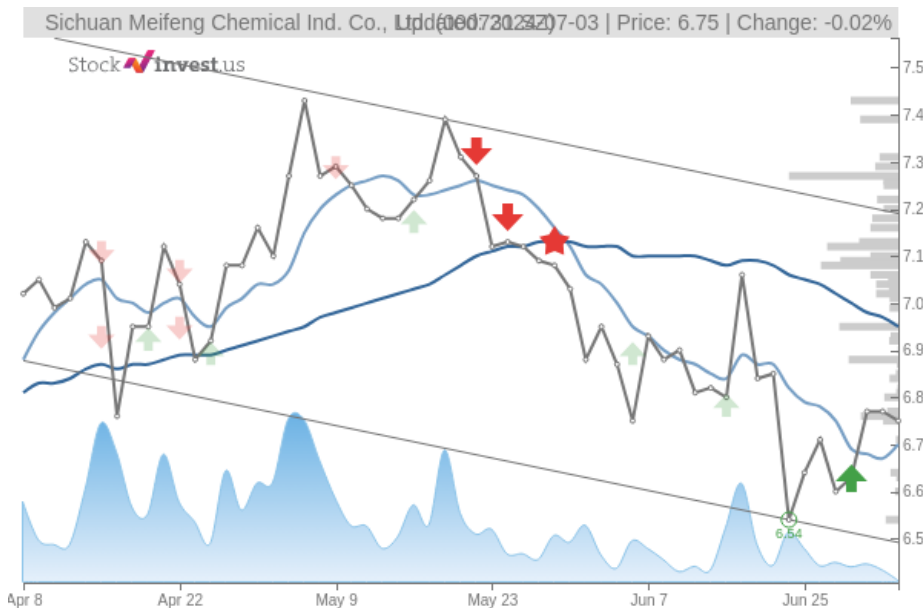


Sichuan Meifeng Chemical Ind. Co., Ltd. (Wed, Jul 03, 2024)

Hold candidate since Jul 03, 2024

StockInvest.us
Gyneju st. 14, "ROCKIT"
Vilnius, LT-01109
Lithuania



score: **-0.94**
#14506/ 54198

Trend: Sell
MV Long: Sell
MV Short: Buy
Pivot: Buy
Volume: Sell
MACD: Buy

Tech commentaries:

The **Sichuan Meifeng Chemical Ind. Co., Ltd.** stock price fell by **-0.295%** on the last day (Wednesday, 3rd Jul 2024) from **¥6.77** to **¥6.75**. During the last trading day the stock fluctuated **3.03%** from a day low at **¥6.60** to a day high of **¥6.80**. The price has risen in 5 of the last 10 days but is still down by **-4.39%** for this period. Volume fell on the last day along with the stock, which is actually a good sign as volume should follow the stock. On the last day, the trading volume fell by **-953 thousand** shares and in total, **2 million** shares were bought and sold for approximately **¥10.55** million.

The stock lies in the middle of a wide and falling trend in the short term and further fall within the trend is signaled. Given the current short-term trend, the stock is expected to fall **-5.09%** during the next 3 months and, with a 90% probability hold a price between **¥6.16** and **¥6.82** at the end of this 3-month period.

A buy signal was issued from a pivot bottom point on **Monday, June 24, 2024**, and so far it has risen 3.21%. Further rise is indicated until a new top pivot has been found. Furthermore, there is a buy signal from the 3 month Moving Average Convergence Divergence (MACD). Some negative signals were issued as well, and these may have some influence on the near short-term development. The **Sichuan Meifeng Chemical Ind. Co., Ltd.** stock holds a buy signal from the short-term Moving Average; at the same time, however, the long-term average holds a general sell signal. Since the longterm average is above the short-term average there is a general sell signal in the stock giving a more negative forecast for the stock. On further gains, the stock will meet resistance from the long-term Moving Average at **¥6.95**. On a fall, the stock will find some support from the short-term average at **¥6.70**. A break-up through the long-term average will give another buy signal, while a fall below the short-term average will add another sell signal and strengthen the general signal. Volume fell together with the price during the last trading day and this reduces the overall risk as volume should follow the price movements.

Sichuan Meifeng Chemical Ind. Co., Ltd. finds support from accumulated volume at **¥6.64** and this level may hold a buying opportunity as an upwards reaction can be expected when the support is being tested. On the upside the stock meets some resistance just above today's level from accumulated volume at **¥7.08**, **¥7.12** and **¥7.27**.

In general the stock tends to have very controlled movements and with good liquidity the risk is considered very low in this stock. During the last day, the stock moved **¥0.200** between high and low, or **3.03%**. For the last week the stock has had daily average volatility of **3.25%**.

Sichuan Meifeng Chemical Ind. Co., Ltd. holds several positive signals, but we still don't find these to be enough for a buy candidate. At the current level, it should be considered as a hold candidate (hold or accumulate) in this position whilst awaiting further development. We have upgraded our analysis conclusion for this stock since the last evaluation from a Sell to a Hold/Accumulate candidate.

Risk: **Low**

Evaluation: **Hold/Accumulate**

Disclaimer: StockInvest.us is a research service that provides financial data and technical analysis of stocks. All users should speak with their financial advisor before buying or selling any securities. Users should not base their investment decision upon "StockInvest.us". By using the site you agree and are held liable for your own investment decisions and agree to Terms of Use and Privacy Policy.