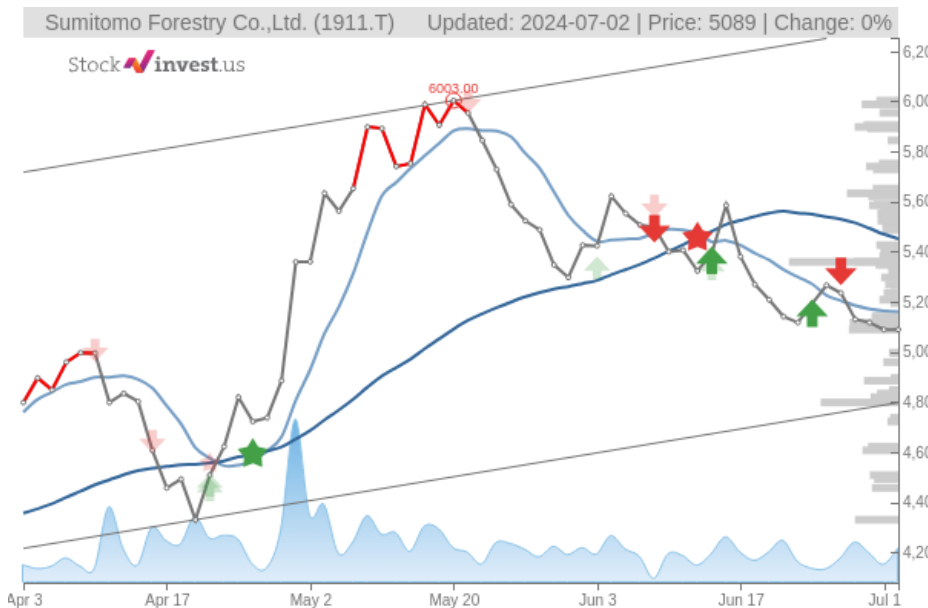


Sumitomo Forestry Co.,Ltd. (Tue, Jul 02, 2024)

Sell candidate since Jun 24, 2024

Loss -2.02%

StockInvest.us
Gyneju st. 14, "ROCKIT"
Vilnius, LT-01109
Lithuania



score: **-3.85**
#25279/ 54198

Trend: Buy
MV Long: Sell
MV Short: Sell
Pivot: Sell
Volume: Buy
MACD: Sell

Tech commentaries:

No changes to the price of **Sumitomo Forestry Co.,Ltd.** stock on the last trading day (Tuesday, 2nd Jul 2024). During the last trading day the stock fluctuated **2.49%** from a day low at **JP¥4,975.00** to a day high of **JP¥5,099.00**. The price has fallen in 7 of the last 10 days and is down by **-3.42%** for this period.

The stock lies in the lower part of a very wide and strong rising trend in the short term, and this may normally pose a very good buying opportunity. If the lower trend floor at **JP¥4,797.10** is broken, it will firstly indicate a slower rate of rising, but may also be an early warning for a trend shift. Given the current short-term trend, the stock is expected to rise **10.17%** during the next 3 months and, with a 90% probability hold a price between **JP¥5,285.03** and **JP¥6,939.16** at the end of this 3-month period.

The volume rose on the last day while price remained unchanged. This may be an early warning and the stock should be watched closely. Some negative signals were issued as well, and these may have some influence on the near short-term development. The **Sumitomo Forestry Co.,Ltd.** stock holds sell signals from both short and long-term Moving Averages giving a more negative forecast for the stock. Also, there is a general sell signal from the relation between the two signals where the long-term average is above the short-term average. On corrections up, there will be some resistance from the lines at **JP¥5,160.00** and **JP¥5,450.97**. A break-up above any of these levels will issue buy signals. A sell signal was issued from a pivot top point on **Monday, May 20, 2024**, and so far it has fallen **-15.23%**. Further fall is indicated until a new bottom pivot has been found. Furthermore, there is currently a sell signal from the 3 month Moving Average Convergence Divergence (MACD).

On the downside, the stock finds support just below today's level from accumulated volume at **JP¥4,798.00** and **JP¥4,607.00**. On the upside the stock meets some resistance just above today's level from accumulated volume at **JP¥5,117.00**, **JP¥5,359.00** and **JP¥5,633.00**.

This stock has average movements during the day and with good trading volume, the risk is considered to be medium. During the last day, the stock moved **JP¥124.00** between high and low, or **2.49%**. For the last week, the stock has had daily average volatility of **1.86%**.

The Sumitomo Forestry Co.,Ltd. stock holds several negative signals and despite the positive trend, we believe **Sumitomo Forestry Co.,Ltd.** will perform weakly in the next couple of days or weeks. Therefore, we hold a negative evaluation of this stock.

Risk: **Medium**

Evaluation: **Sell Candidate**

Disclaimer: StockInvest.us is a research service that provides financial data and technical analysis of stocks. All users should speak with their financial advisor before buying or selling any securities. Users should not base their investment decision upon "StockInvest.us". By using the site you agree and are held liable for your own investment decisions and agree to Terms of Use and Privacy Policy.