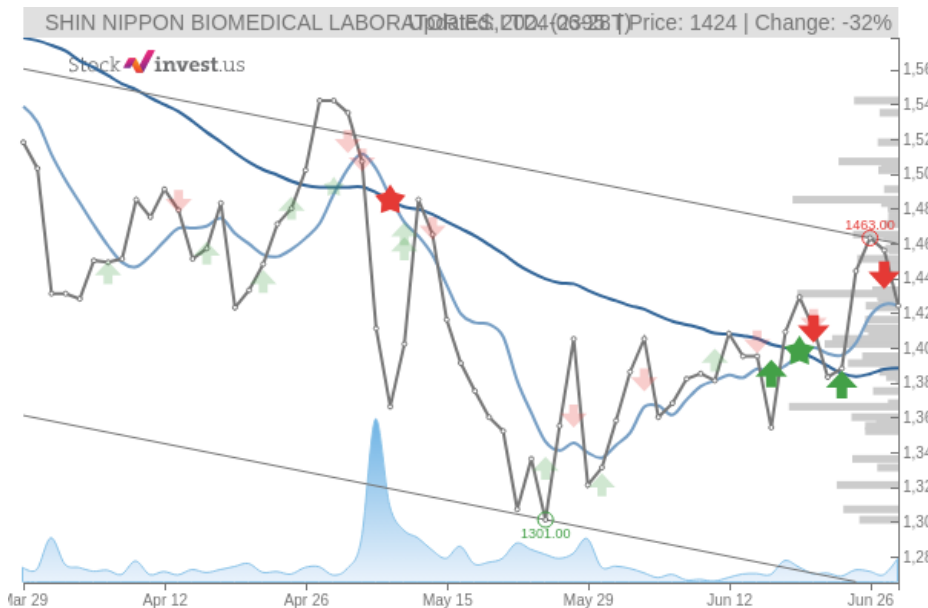


SHIN NIPPON BIOMEDICAL LABORATORIES,LTD. (Fri, Jun 28, 2024)

Sell candidate since Jun 28, 2024

StockInvest.us
Gyneju st. 14, "ROCKIT"
Vilnius, LT-01109
Lithuania



score: **-3.20**
#24300/ 54216

Trend: Sell
MV Long: Buy
MV Short: Sell
Pivot: Sell
Volume: Buy
MACD: Buy

Tech commentaries:

The **SHIN NIPPON BIOMEDICAL LABORATORIES,LTD.** stock price fell by **-2.20%** on the last day (Friday, 28th Jun 2024) from **JP¥1,456.00** to **JP¥1,424.00**. During the last trading day the stock fluctuated **3.70%** from a day low at **JP¥1,404.00** to a day high of **JP¥1,456.00**. The price has been going up and down for this period, and there has been a 2.08% gain for the last 2 weeks. Volume has increased on the last day by **139 thousand** shares but on falling prices. This may be an early warning and the risk will be increased slightly over the next couple of days. In total, **281 thousand** shares were bought and sold for approximately **JP¥400.71** million.

The stock lies the upper part of a wide and falling trend in the short term, and this may normally pose a very good selling opportunity for the short-term trader as reaction back towards the lower part of the trend can be expected. A break up at the top trend line at **JP¥1,459.76** will firstly indicate a slower falling rate, but may be the first sign of a trend shift. Given the current short-term trend, the stock is expected to fall **-6.44%** during the next 3 months and, with a 90% probability hold a price between **JP¥1,179.30** and **JP¥1,365.74** at the end of this 3-month period. Do note, that if the stock price manages to stay at current levels or higher, our prediction target will start to change positively over the next few days as the conditions for the current predictions will be broken.

The **SHIN NIPPON BIOMEDICAL LABORATORIES,LTD.** stock holds a sell signal from the short-term Moving Average; at the same time, however, there is a buy signal from the long-term average. Since the short-term average is above the long-term average there is a general buy signal in the stock giving a positive forecast for the stock. On further gains, the stock will meet resistance from the short-term Moving Average at approximately **JP¥1,424.14**. On a fall, the stock will find some support from the long-term average at approximately **JP¥1,388.11**. A break-up through the short-term average will send a buy signal, whereas a breakdown through the long-term average will send a sell signal. Furthermore, there is a buy signal from the 3 month Moving Average Convergence Divergence (MACD). Some negative signals were issued as well, and these may have some influence on the near short-term development. A sell signal was issued from a pivot top point on **Wednesday, June 26, 2024**, and so far it has fallen **-2.67%**. Further fall is indicated until a new bottom pivot has been found. Volume rose on falling prices yesterday. This may be an early warning and the stock should be followed more closely.

SHIN NIPPON BIOMEDICAL LABORATORIES,LTD. finds support from accumulated volume at **JP¥1,411.00** and this level may hold a buying opportunity as an upwards reaction can be expected when the support is being tested. On the upside the stock meets some resistance just above today's level from accumulated volume at **JP¥1,431.00**, **JP¥1,485.00** and **JP¥1,507.00**.

This stock is usually traded at a good volume, and with minor daily changes, the risk is considered to be low. During the last day, the stock moved **JP¥52.00 (3.70%)** between high and low. For the last week, the stock has had daily average volatility of **2.68%**.

SHIN NIPPON BIOMEDICAL LABORATORIES,LTD. holds several negative signals and we believe that it will still perform weakly in the next couple of days or weeks. We, therefore, hold a negative evaluation of this stock. Due to some small weaknesses in the technical picture we have downgraded our analysis conclusion for this stock since the last evaluation from a Hold/Accumulate to a Sell candidate.

Disclaimer: StockInvest.us is a research service that provides financial data and technical analysis of stocks. All users should speak with their financial advisor before buying or selling any securities. Users should not base their investment decision upon "StockInvest.us". By using the site you agree and are held liable for your own investment decisions and agree to Terms of Use and Privacy Policy.

Evaluation: **Sell Candidate**