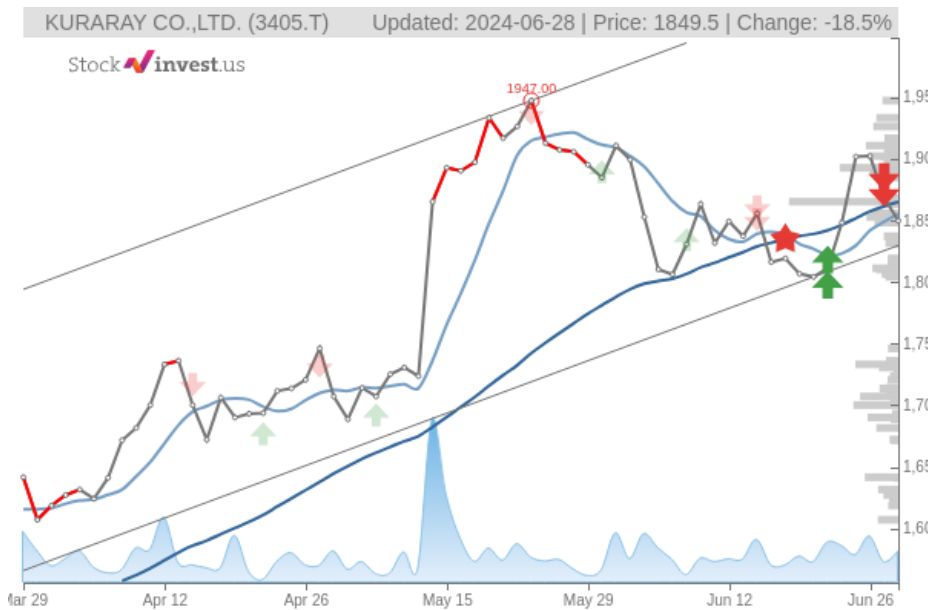


# KURARAY CO.,LTD. (Fri, Jun 28, 2024)

Sell candidate since Jun 28, 2024

StockInvest.us  
Gyneju st. 14, "ROCKIT"  
Vilnius, LT-01109  
Lithuania



score: **-3.73**  
#25690/ 54216

Trend: Buy  
MV Long: Sell  
MV Short: Sell  
Pivot: Sell  
Volume: Buy  
MACD: Buy

## Tech commentaries:

The **KURARAY CO.,LTD.** stock price fell by **-0.99%** on the last day (Friday, 28th Jun 2024) from **JP¥1,868.00** to **JP¥1,849.50**. During the last trading day the stock fluctuated **1.61%** from a day low at **JP¥1,837.50** to a day high of **JP¥1,867.00**. The price has been going up and down for this period, and there has been a **-0.32%** loss for the last 2 weeks. Volume has increased on the last day by **335 thousand** shares but on falling prices. This may be an early warning and the risk will be increased slightly over the next couple of days. In total, **2 million** shares were bought and sold for approximately **JP¥2.94** billion.

The stock lies in the lower part of a wide and strong rising trend in the short term, and this may normally pose a very good buying opportunity. If the lower trend floor at **JP¥1,829.52** is broken, it will firstly indicate a slower rate of rising, but may also be an early warning for a trend shift. Given the current short-term trend, the stock is expected to rise **14.70%** during the next 3 months and, with a 90% probability hold a price between **JP¥2,098.51** and **JP¥2,360.12** at the end of this 3-month period.

Furthermore, there is a buy signal from the 3 month Moving Average Convergence Divergence (MACD). Some negative signals were issued as well, and these may have some influence on the near short-term development. The **KURARAY CO.,LTD.** stock holds sell signals from both short and long-term Moving Averages giving a more negative forecast for the stock. Also, there is a general sell signal from the relation between the two signals where the long-term average is above the short-term average. On corrections up, there will be some resistance from the lines at **JP¥1,854.86** and **JP¥1,864.71**. A break-up above any of these levels will issue buy signals. A sell signal was issued from a pivot top point on **Thursday, May 23, 2024**, and so far it has fallen - **5.01%**. Further fall is indicated until a new bottom pivot has been found. Volume rose on falling prices yesterday. This may be an early warning and the stock should be followed more closely.

On the downside, the stock finds support just below today's level from accumulated volume at **JP¥1,733.00** and **JP¥1,707.00**. On the upside the stock meets some resistance just above today's level from accumulated volume at **JP¥1,865.00**, **JP¥1,892.50** and **JP¥1,910.50**.

In general the stock tends to have very controlled movements and with good liquidity the risk is considered very low in this stock. During the last day, the stock moved **JP¥29.50** between high and low, or **1.61%**. For the last week the stock has had daily average volatility of **1.61%**.

The **KURARAY CO.,LTD.** stock holds several negative signals and despite the positive trend, we believe **KURARAY CO.,LTD.** will perform weakly in the next couple of days or weeks. Therefore, we hold a negative evaluation of this stock. Due to some small weaknesses in the technical picture we have downgraded our analysis conclusion for this stock since the last evaluation from a Hold/Accumulate to a Sell candidate.

Risk: **Low**

Evaluation: **Sell Candidate**

Disclaimer: StockInvest.us is a research service that provides financial data and technical analysis of stocks. All users should speak with their financial advisor before buying or selling any securities. Users should not base their investment decision upon "StockInvest.us". By using the site you agree and are held liable for your own investment decisions and agree to Terms of Use and Privacy Policy.