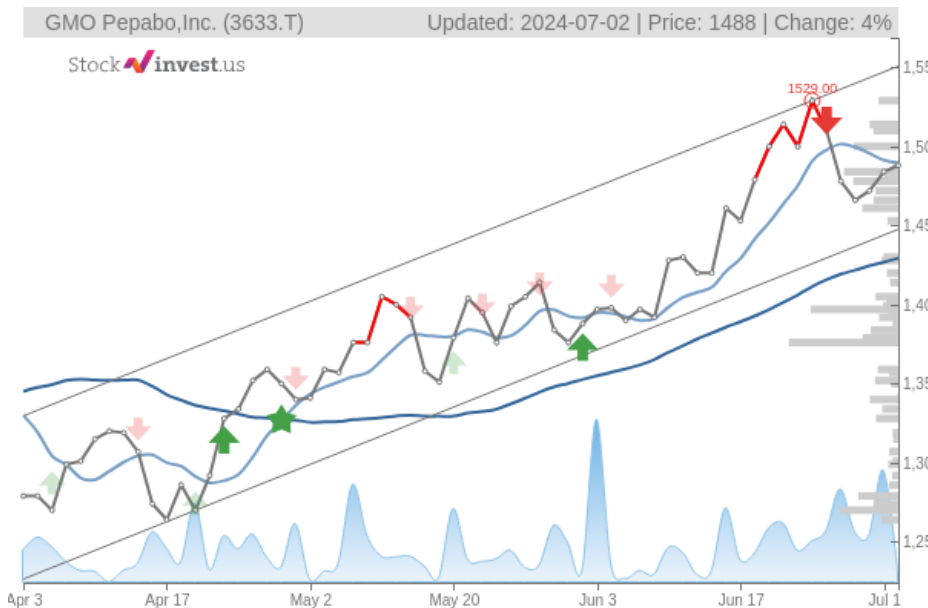


# GMO Pepabo, Inc. (Tue, Jul 02, 2024)

Buy candidate since Jun 03, 2024

Gain 6.51%

StockInvest.us  
Gyneju st. 14, "ROCKIT"  
Vilnius, LT-01109  
Lithuania



## Tech commentaries:

The **GMO Pepabo, Inc.** stock price gained **0.270%** on the last trading day (Tuesday, 2nd Jul 2024), rising from **JP¥1,484.00** to **JP¥1,488.00**. It has now gained 3 days in a row. It will be exciting to see whether it manages to continue gaining or take a minor break for the next few days. During the last trading day the stock fluctuated **0.677%** from a day low at **JP¥1,478.00** to a day high of **JP¥1,488.00**. The price has risen in 6 of the last 10 days and is up by **0.61%** over the past 2 weeks. Volume fell on the last day by **-15 thousand** shares and in total, **3 thousand** shares were bought and sold for approximately **JP¥4.02** million. You should take into consideration that falling volume on higher prices causes divergence and may be an early warning about possible changes over the next couple of days.

The stock lies in the middle of a strong rising trend in the short term and a further rise within the trend is signaled. Given the current short-term trend, the stock is expected to rise **16.63%** during the next 3 months and, with a 90% probability hold a price between **JP¥1,688.36** and **JP¥1,808.64** at the end of this 3-month period.

The **GMO Pepabo, Inc.** stock holds a sell signal from the short-term Moving Average; at the same time, however, there is a buy signal from the long-term average. Since the short-term average is above the long-term average there is a general buy signal in the stock giving a positive forecast for the stock. On further gains, the stock will meet resistance from the short-term Moving Average at approximately **JP¥1,489.57**. On a fall, the stock will find some support from the long-term average at approximately **JP¥1,429.34**. A break-up through the short-term average will send a buy signal, whereas a breakdown through the long-term average will send a sell signal. Furthermore, there is a buy signal from the 3 month Moving Average Convergence Divergence (MACD). Volume fell during the last trading day despite gaining prices. This causes a divergence between volume and price and it may be an early warning. The stock should be watched closely. Some negative signals were issued as well, and these may have some influence on the near short-term development. A sell signal was issued from a pivot top point on **Monday, June 24, 2024**, and so far it has fallen **-2.68%**. Further fall is indicated until a new bottom pivot has been found.

On the downside, the stock finds support just below today's level from accumulated volume at **JP¥1,397.00** and **JP¥1,376.00**. On the upside the stock meets some resistance just above today's level from accumulated volume at **JP¥1,500.00**, **JP¥1,510.00** and **JP¥1,514.00**.

This stock has average movements during the day and with good trading volume, the risk is considered to be medium. During the last day, the stock moved **JP¥10.00** between high and low, or **0.677%**. For the last week, the stock has had daily average volatility of **2.34%**.

Several short-term signals, along with a general good trend, are positive and we conclude that the current level may hold a buying opportunity as there is a fair chance for **GMO Pepabo, Inc.** stock to perform well in the short-term.

Risk: **Medium**

Evaluation: **Buy Candidate**

Disclaimer: StockInvest.us is a research service that provides financial data and technical analysis of stocks. All users should speak with their financial advisor before buying or selling any securities. Users should not base their investment decision upon "StockInvest.us". By using the site you agree and are held liable for your own investment decisions and agree to Terms of Use and Privacy Policy.