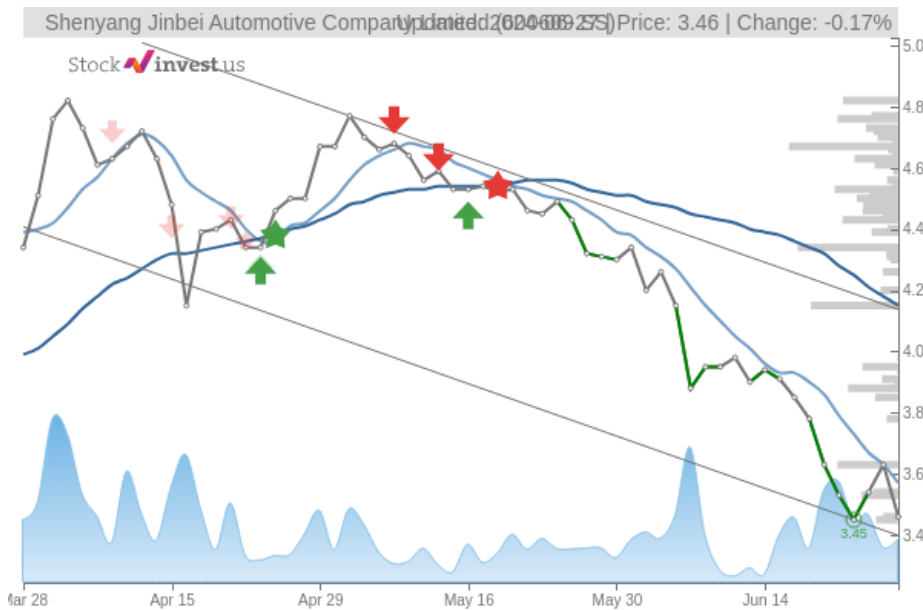


Shenyang Jinbei Automotive Company Limited (Thu, Jun 27, 2024)

Sell candidate since May 28, 2024

Loss -19.91%

StockInvest.us
Gyneju st. 14, "ROCKIT"
Vilnius, LT-01109
Lithuania



score: **-3.20**
#23239/ 54252

Trend: Sell
MV Long: Sell
MV Short: Sell
Pivot: Buy
Volume: Buy
MACD: Sell

Tech commentaries:

The **Shenyang Jinbei Automotive Co Ltd** stock price fell by **-4.68%** on the last day (Thursday, 27th Jun 2024) from **\$3.63** to **\$3.46**. During the last trading day the stock fluctuated **4.62%** from a day low at **\$3.46** to a day high of **\$3.62**. The price has fallen in 7 of the last 10 days and is down by **-11.28%** for this period. Volume has increased on the last day by **901 thousand** shares but on falling prices. This may be an early warning and the risk will be increased slightly over the next couple of days. In total, **9** million shares were bought and sold for approximately **\$31.11** million.

The stock lies in the lower of a wide and falling trend in the short term, and this may normally pose a very good buying opportunity. If the lower trend floor at **\$3.40** is broken, it will firstly indicate a stronger fall rate. Given the current short-term trend, the stock is expected to fall **-19.60%** during the next 3 months and, with a 90% probability hold a price between **\$2.73** and **\$3.33** at the end of this 3-month period. Do note, that if the stock price manages to stay at current levels or higher, our prediction target will start to change positively over the next few days as the conditions for the current predictions will be broken.

A buy signal was issued from a pivot bottom point on **Monday, June 24, 2024**, and so far it has risen 0.290%. Further rise is indicated until a new top pivot has been found. Some negative signals were issued as well, and these may have some influence on the near short-term development. The **Shenyang Jinbei Automotive Co Ltd** stock holds sell signals from both short and long-term Moving Averages giving a more negative forecast for the stock. Also, there is a general sell signal from the relation between the two signals where the long-term average is above the short-term average. On corrections up, there will be some resistance from the lines at **\$3.57** and **\$4.15**. A break-up above any of these levels will issue buy signals. Furthermore, there is currently a sell signal from the 3 month Moving Average Convergence Divergence (MACD). Volume rose on falling prices yesterday. This may be an early warning and the stock should be followed more closely.

Shenyang Jinbei Automotive Co Ltd finds support from accumulated volume at **\$3.45** and this level may hold a buying opportunity as an upwards reaction can be expected when the support is being tested. On the upside the stock meets some resistance just above today's level from accumulated volume at **\$3.63**, **\$3.88** and **\$4.15**.

This stock may move much during the day (volatility) and with a large prediction interval from the Bollinger Band this stock is considered to be "high risk". During the last day, the stock moved **\$0.160** between high and low, or **4.62%**. For the last week, the stock has had daily average volatility of **4.04%**.

Shenyang Jinbei Automotive Co Ltd holds several negative signals and is within a wide and falling trend, so we believe it will still perform weakly in the next couple of days or weeks. We therefore hold a negative evaluation of this stock.

Risk: **High**

Evaluation: **Sell Candidate**

Disclaimer: StockInvest.us is a research service that provides financial data and technical analysis of stocks. All users should speak with their financial advisor before buying or selling any securities. Users should not base their investment decision upon "StockInvest.us". By using the site you agree and are held liable for your own investment decisions and agree to Terms of Use and Privacy Policy.