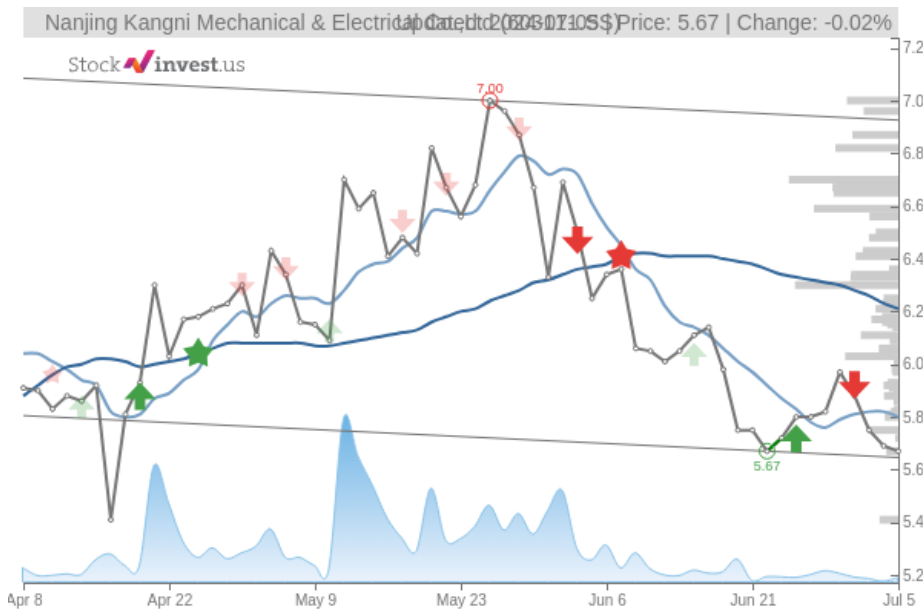


Nanjing Kangni Mechanical & Electrical Co.,Ltd (Fri, Jul 05, 2024)

Hold candidate since Jun 28, 2024

Loss -2.58%

StockInvest.us
Gyneju st. 14, "ROCKIT"
Vilnius, LT-01109
Lithuania



score: **0.666**

#8338/ 54179

Trend: Sell
MV Long: Sell
MV Short: Sell
Pivot: Buy
Volume: Buy
MACD: Buy

Tech commentaries:

The **Nanjing Kangni Mechanical & Electrical** stock price fell by **-0.351%** on the last day (Friday, 5th Jul 2024) from **\$5.69** to **\$5.67**. It has now fallen 4 days in a row. During the last trading day the stock fluctuated **2.70%** from a day low at **\$5.56** to a day high of **\$5.71**. The price has fallen in 5 of the last 10 days and is down by **-1.39%** for this period. Volume has increased on the last day by **2 million** shares but on falling prices. This may be an early warning and the risk will be increased slightly over the next couple of days. In total, **6 million** shares were bought and sold for approximately **\$32.34** million.

The stock lies in the lower of a wide and falling trend in the short term, and this may normally pose a very good buying opportunity. If the lower trend floor at **\$5.65** is broken, it will firstly indicate a stronger fall rate. Given the current short-term trend, the stock is expected to fall **-2.24%** during the next 3 months and, with a 90% probability hold a price between **\$5.52** and **\$6.77** at the end of this 3-month period.

A buy signal was issued from a pivot bottom point on **Monday, June 24, 2024**, and so far it has fallen 0%. Further rise is indicated until a new top pivot has been found. Furthermore, there is a buy signal from the 3 month Moving Average Convergence Divergence (MACD). Some negative signals were issued as well, and these may have some influence on the near short-term development. The **Nanjing Kangni Mechanical & Electrical** stock holds sell signals from both short and long-term Moving Averages giving a more negative forecast for the stock. Also, there is a general sell signal from the relation between the two signals where the long-term average is above the short-term average. On corrections up, there will be some resistance from the lines at **\$5.80** and **\$6.21**. A break-up above any of these levels will issue buy signals. Volume rose on falling prices yesterday. This may be an early warning and the stock should be followed more closely.

Nanjing Kangni Mechanical & Electrical finds support from accumulated volume at **\$5.41** and this level may hold a buying opportunity as an upwards reaction can be expected when the support is being tested. On the upside the stock meets some resistance from accumulated volume at **\$6.30**, **\$6.59** and **\$6.70**.

This stock has average movements during the day and with good trading volume, the risk is considered to be medium. During the last day, the stock moved **\$0.150** between high and low, or **2.70%**. For the last week, the stock has had daily average volatility of **2.27%**.

Nanjing Kangni Mechanical & Electrical holds several negative signals and this should be a sell candidate, but due to the general chance for a turnaround situation it should be considered as a hold candidate (hold or accumulate) in this position whilst awaiting further development.

Risk: **Medium**

Evaluation: **Hold/Accumulate**

Disclaimer: StockInvest.us is a research service that provides financial data and technical analysis of stocks. All users should speak with their financial advisor before buying or selling any securities. Users should not base their investment decision upon "StockInvest.us". By using the site you agree and are held liable for your own investment decisions and agree to Terms of Use and Privacy Policy.