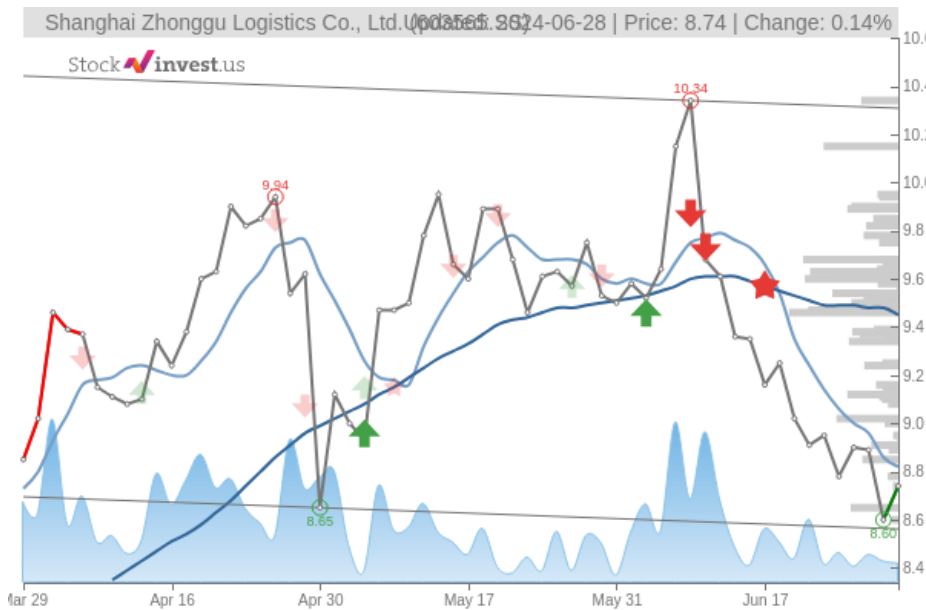


Shanghai Zhonggu Logistics Co., Ltd. (Fri, Jun 28, 2024)

Sell candidate since Jun 12, 2024 Loss -9.05%

StockInvest.us
Gyneju st. 14, "ROCKIT"
Vilnius, LT-01109
Lithuania



score: **-2.10**
#20182/ 54216

Trend: Hold
MV Long: Sell
MV Short: Sell
Pivot: Buy
Volume: Sell
MACD: Sell

Tech commentaries:

The **Shanghai Zhonggu Logistics Co., Ltd.** stock price gained **1.63%** on the last trading day (Friday, 28th Jun 2024), rising from **\$8.60** to **\$8.74**. During the last trading day the stock fluctuated **3.49%** from a day low at **\$8.60** to a day high of **\$8.90**. The price has fallen in 6 of the last 10 days and is down by **-6.52%** for this period. Volume fell on the last day by **-188 thousand** shares and in total, **6 million** shares were bought and sold for approximately **\$53.47 million**. You should take into consideration that falling volume on higher prices causes divergence and may be an early warning about possible changes over the next couple of days.

The stock is at the lower part of a wide and horizontal trend in the short term, and normally this may pose a good buying opportunity, though a breakdown through the bottom trend line at **\$8.56** will give a strong sell signal and a trend shift may be expected. Given the current horizontal trend, you can expect **Shanghai Zhonggu Logistics Co., Ltd.** stock with a 90% probability to be traded between **\$8.45** and **\$10.18** at the end of this 3-month period. A break of a horizontal trend is often followed by a large increase in the volume, and stocks seldom manage to go directly from the bottom of a trend up to the top. Stocks turning up in the middle of a horizontal trend are therefore considered to be potential runners.

A buy signal was issued from a pivot bottom point on **Thursday, June 27, 2024**, and so far it has risen 1.63%. Further rise is indicated until a new top pivot has been found. Volume fell during the last trading day despite gaining prices. This causes a divergence between volume and price and it may be an early warning. The stock should be watched closely. Some negative signals were issued as well, and these may have some influence on the near short-term development. The **Shanghai Zhonggu Logistics Co., Ltd.** stock holds sell signals from both short and long-term Moving Averages giving a more negative forecast for the stock. Also, there is a general sell signal from the relation between the two signals where the long-term average is above the short-term average. On corrections up, there will be some resistance from the lines at **\$8.82** and **\$9.45**. A break-up above any of these levels will issue buy signals. Furthermore, there is currently a sell signal from the 3 month Moving Average Convergence Divergence (MACD).

Shanghai Zhonggu Logistics Co., Ltd. finds support from accumulated volume at **\$8.65** and this level may hold a buying opportunity as an upwards reaction can be expected when the support is being tested. On the upside the stock meets some resistance from accumulated volume at **\$9.46**, **\$9.60** and **\$9.68**.

This stock has average movements during the day and with good trading volume, the risk is considered to be medium. During the last day, the stock moved **\$0.300** between high and low, or **3.49%**. For the last week, the stock has had daily average volatility of **3.32%**.

Shanghai Zhonggu Logistics Co., Ltd. holds several negative signals and is within a wide and falling trend, so we believe it will still perform weakly in the next couple of days or weeks. We therefore hold a negative evaluation of this stock.

Risk: **Medium**

Evaluation: **Sell Candidate**

Disclaimer: StockInvest.us is a research service that provides financial data and technical analysis of stocks. All users should speak with their financial advisor before buying or selling any securities. Users should not base their investment decision upon "StockInvest.us". By using the site you agree and are held liable for your own investment decisions and agree to Terms of Use and Privacy Policy.