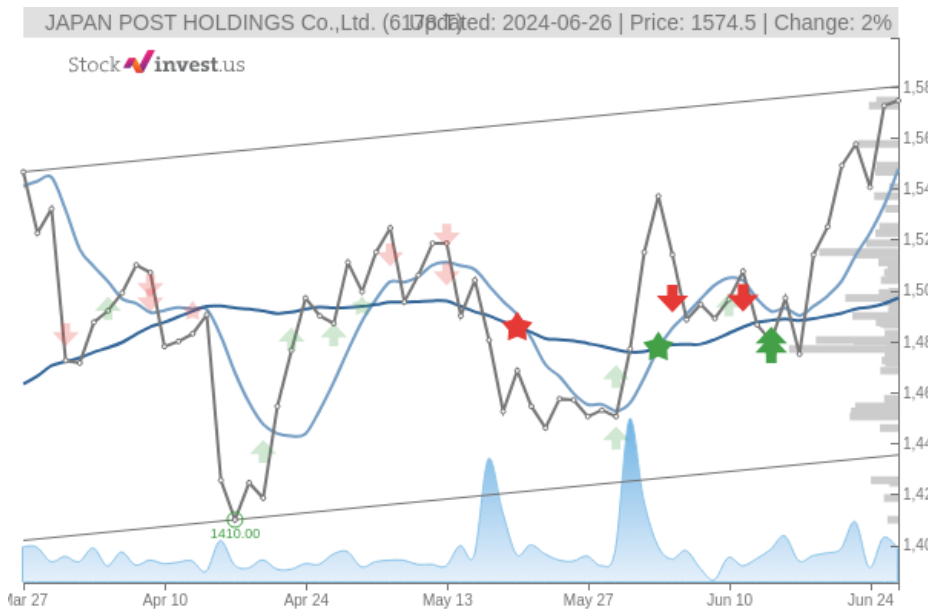


JAPAN POST HOLDINGS Co.,Ltd. (Wed, Jun 26, 2024)

Buy candidate since Jun 20, 2024

Gain 1.65%

StockInvest.us
Gyneju st. 14, "ROCKIT"
Vilnius, LT-01109
Lithuania



score: **4.07**

#992/ 54046

Trend: Buy
MV Long: Buy
MV Short: Buy
Pivot: Buy
Volume: Sell
MACD: Buy

Tech commentaries:

The **JAPAN POST HOLDINGS Co.,Ltd.** stock price gained **0.127%** on the last trading day (Wednesday, 26th Jun 2024), rising from **JP¥1,572.50** to **JP¥1,574.50**. During the last trading day the stock fluctuated **1.47%** from a day low at **JP¥1,565.00** to a day high of **JP¥1,588.00**. The price has risen in 7 of the last 10 days and is up by **5.92%** over the past 2 weeks. Volume fell on the last day by **-2 million** shares and in total, **9 million** shares were bought and sold for approximately **JP¥14.48** billion. You should take into consideration that falling volume on higher prices causes divergence and may be an early warning about possible changes over the next couple of days.

The stock lies in the upper part of a wide and weak rising trend in the short term, and this may normally pose a very good selling opportunity for the short-term trader as reaction back towards the lower part of the trend can be expected. A break-up at the top trend line at **JP¥1,580.03** will firstly indicate a stronger rate of rising. Given the current short-term trend, the stock is expected to rise **2.17%** during the next 3 months and, with a 90% probability hold a price between **JP¥1,466.53** and **JP¥1,614.28** at the end of this 3-month period.

Mostly positive signals in the chart today. The **JAPAN POST HOLDINGS Co.,Ltd.** stock holds buy signals from both short and long-term Moving Averages giving a positive forecast for the stock. Also, there is a general buy signal from the relation between the two signals where the short-term average is above the long-term average. On corrections down, there will be some support from the lines at **JP¥1,547.57** and **JP¥1,497.09**. A breakdown below any of these levels will issue sell signals. A buy signal was issued from a pivot bottom point on **Wednesday, April 17, 2024**, and so far it has risen 11.67%. Further rise is indicated until a new top pivot has been found. Furthermore, there is a buy signal from the 3 month Moving Average Convergence Divergence (MACD). Volume fell during the last trading day despite gaining prices. This causes a divergence between volume and price and it may be an early warning. The stock should be watched closely.

JAPAN POST HOLDINGS Co.,Ltd. finds support from accumulated volume at **JP¥1,515.00** and this level may hold a buying opportunity as an upwards reaction can be expected when the support is being tested. There is no resistance from accumulated volume above today's level and given the right condition the stock may perform very well during the next couple of days.

This stock is usually traded at a good volume, and with minor daily changes, the risk is considered to be low. During the last day, the stock moved **JP¥23.00 (1.47%)** between high and low. For the last week, the stock has had daily average volatility of **1.59%**.

Several short-term signals, along with a general good trend, are positive and we conclude that the current level may hold a buying opportunity as there is a fair chance for **JAPAN POST HOLDINGS Co.,Ltd.** stock to perform well in the short-term. Due to some small weaknesses in the technical picture we have downgraded our analysis conclusion for this stock since the last evaluation from a Strong Buy to a Buy candidate.

Risk: **Low**

Evaluation: **Buy Candidate**

Disclaimer: StockInvest.us is a research service that provides financial data and technical analysis of stocks. All users should speak with their financial advisor before buying or selling any securities. Users should not base their investment decision upon "StockInvest.us". By using the site you agree and are held liable for your own investment decisions and agree to Terms of Use and Privacy Policy.