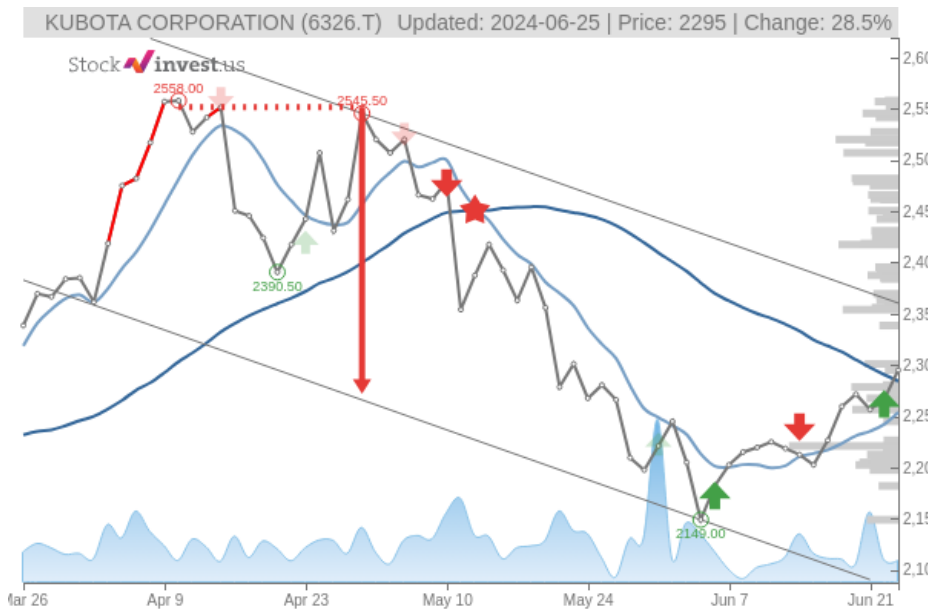


KUBOTA CORPORATION (Tue, Jun 25, 2024)

Buy candidate since Jun 25, 2024

StockInvest.us
Gyneju st. 14, "ROCKIT"
Vilnius, LT-01109
Lithuania



score: **2.31**

#3199/ 52282

Trend: Sell
MV Long: Buy
MV Short: Buy
Pivot: Buy
Volume: Sell
MACD: Buy

Tech commentaries:

The **KUBOTA CORPORATION** stock price gained **1.26%** on the last trading day (Tuesday, 25th Jun 2024), rising from **JP¥2,266.50** to **JP¥2,295.00**. During the last trading day the stock fluctuated **1.23%** from a day low at **JP¥2,268.00** to a day high of **JP¥2,296.00**. The price has risen in 6 of the last 10 days and is up by **3.4%** over the past 2 weeks. Volume fell on the last day by **-68 thousand** shares and in total, **2 million** shares were bought and sold for approximately **JP¥5.49** billion. You should take into consideration that falling volume on higher prices causes divergence and may be an early warning about possible changes over the next couple of days.

The stock lies in the middle of a wide and falling trend in the short term and further fall within the trend is signaled. Given the current short-term trend, the stock is expected to fall **-11.34%** during the next 3 months and, with a 90% probability hold a price between **JP¥1,844.75** and **JP¥2,092.62** at the end of this 3-month period. Do note, that if the stock price manages to stay at current levels or higher, our prediction target will start to change positively over the next few days as the conditions for the current predictions will be broken.

Mostly positive signals in the chart today. The **KUBOTA CORPORATION** stock holds buy signals from both short and long-term Moving Averages giving a positive forecast for the stock, but the stock has a general sell signal from the relation between the two signals where the long-term average is above the short-term average. On corrections down, there will be some support from the lines at **JP¥2,254.00** and **JP¥2,284.19**. A breakdown below any of these levels will issue sell signals. A buy signal was issued from a pivot bottom point on **Wednesday, June 05, 2024**, and so far it has risen 6.79%. Further rise is indicated until a new top pivot has been found. Furthermore, there is a buy signal from the 3 month Moving Average Convergence Divergence (MACD). Volume fell during the last trading day despite gaining prices. This causes a divergence between volume and price and it may be an early warning. The stock should be watched closely.

KUBOTA CORPORATION finds support from accumulated volume at **JP¥2,278.50** and this level may hold a buying opportunity as an upwards reaction can be expected when the support is being tested. On the upside the stock meets some resistance just above today's level from accumulated volume at **JP¥2,354.00**, **JP¥2,417.50** and **JP¥2,520.00**.

In general the stock tends to have very controlled movements and with good liquidity the risk is considered very low in this stock. During the last day, the stock moved **JP¥28.00** between high and low, or **1.23%**. For the last week the stock has had daily average volatility of **1.47%**.

Several short-term signals are positive, despite the stock being in a falling trend, we conclude that the current level may hold a buying opportunity as there is a fair chance for stock to perform well in the short-term. We have upgraded our analysis conclusion for this stock since the last evaluation from a Hold/Accumulate to a Buy candidate.

Risk: **Low**

Evaluation: **Buy Candidate**

Disclaimer: StockInvest.us is a research service that provides financial data and technical analysis of stocks. All users should speak with their financial advisor before buying or selling any securities. Users should not base their investment decision upon "StockInvest.us". By using the site you agree and are held liable for your own investment decisions and agree to Terms of Use and Privacy Policy.