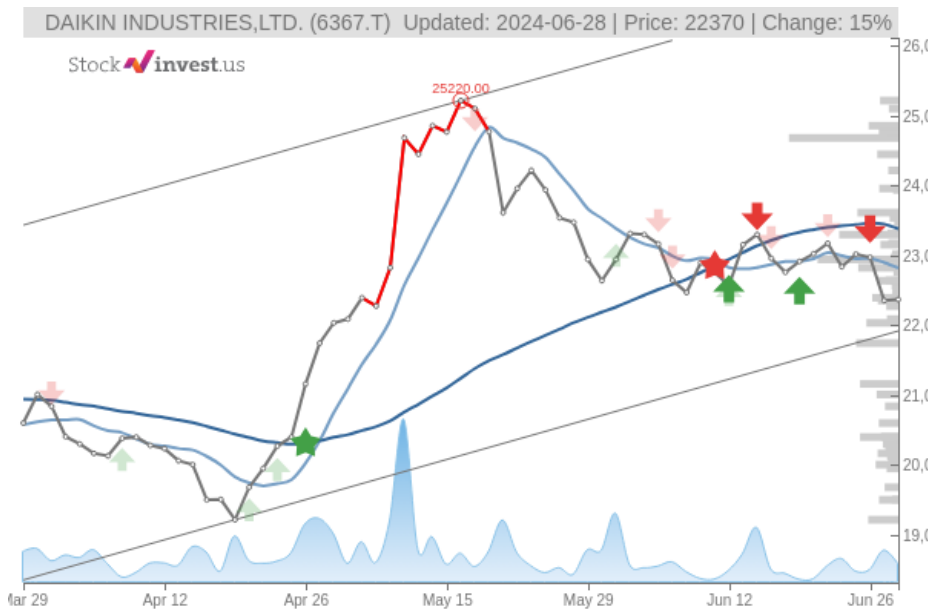


DAIKIN INDUSTRIES,LTD. (Fri, Jun 28, 2024)

Sell candidate since Jun 19, 2024 Loss -2.38%

StockInvest.us
Gyneju st. 14, "ROCKIT"
Vilnius, LT-01109
Lithuania



score: **-2.36**
#18470/ 54241

Trend: Buy
MV Long: Sell
MV Short: Sell
Pivot: Sell
Volume: Sell
MACD: Buy

Tech commentaries:

The **DAIKIN INDUSTRIES,LTD.** stock price gained **0.0671%** on the last trading day (Friday, 28th Jun 2024), rising from **JP¥22,355.00** to **JP¥22,370.00**. During the last trading day the stock fluctuated **1.33%** from a day low at **JP¥22,235.00** to a day high of **JP¥22,530.00**. The price has been going up and down for this period, and there has been a **-3.99%** loss for the last 2 weeks. Volume fell on the last day by **-361 thousand** shares and in total, **1 million** shares were bought and sold for approximately **JP¥23.83** billion. You should take into consideration that falling volume on higher prices causes divergence and may be an early warning about possible changes over the next couple of days.

The stock lies in the lower part of a wide and strong rising trend in the short term, and this may normally pose a very good buying opportunity. If the lower trend floor at **JP¥21,918.96** is broken, it will firstly indicate a slower rate of rising, but may also be an early warning for a trend shift. Given the current short-term trend, the stock is expected to rise **15.22%** during the next 3 months and, with a 90% probability hold a price between **JP¥25,254.91** and **JP¥31,113.25** at the end of this 3-month period.

Furthermore, there is a buy signal from the 3 month Moving Average Convergence Divergence (MACD). Volume fell during the last trading day despite gaining prices. This causes a divergence between volume and price and it may be an early warning. The stock should be watched closely. Some negative signals were issued as well, and these may have some influence on the near short-term development. The **DAIKIN INDUSTRIES,LTD.** stock holds sell signals from both short and long-term Moving Averages giving a more negative forecast for the stock. Also, there is a general sell signal from the relation between the two signals where the long-term average is above the short-term average. On corrections up, there will be some resistance from the lines at **JP¥22,822.86** and **JP¥23,383.71**. A break-up above any of these levels will issue buy signals. A sell signal was issued from a pivot top point on **Thursday, May 16, 2024**, and so far it has fallen **-11.30%**. Further fall is indicated until a new bottom pivot has been found.

DAIKIN INDUSTRIES,LTD. finds support from accumulated volume at **JP¥21,745.00** and this level may hold a buying opportunity as an upwards reaction can be expected when the support is being tested. On the upside the stock meets some resistance just above today's level from accumulated volume at **JP¥22,945.00**, **JP¥23,300.00** and **JP¥24,685.00**.

In general the stock tends to have very controlled movements and with good liquidity the risk is considered very low in this stock. During the last day, the stock moved **JP¥295.00** between high and low, or **1.33%**. For the last week the stock has had daily average volatility of **1.92%**.

The **DAIKIN INDUSTRIES,LTD.** stock holds several negative signals and despite the positive trend, we believe **DAIKIN INDUSTRIES,LTD.** will perform weakly in the next couple of days or weeks. Therefore, we hold a negative evaluation of this stock.

Risk: **Low**

Evaluation: **Sell Candidate**

Disclaimer: StockInvest.us is a research service that provides financial data and technical analysis of stocks. All users should speak with their financial advisor before buying or selling any securities. Users should not base their investment decision upon "StockInvest.us". By using the site you agree and are held liable for your own investment decisions and agree to Terms of Use and Privacy Policy.