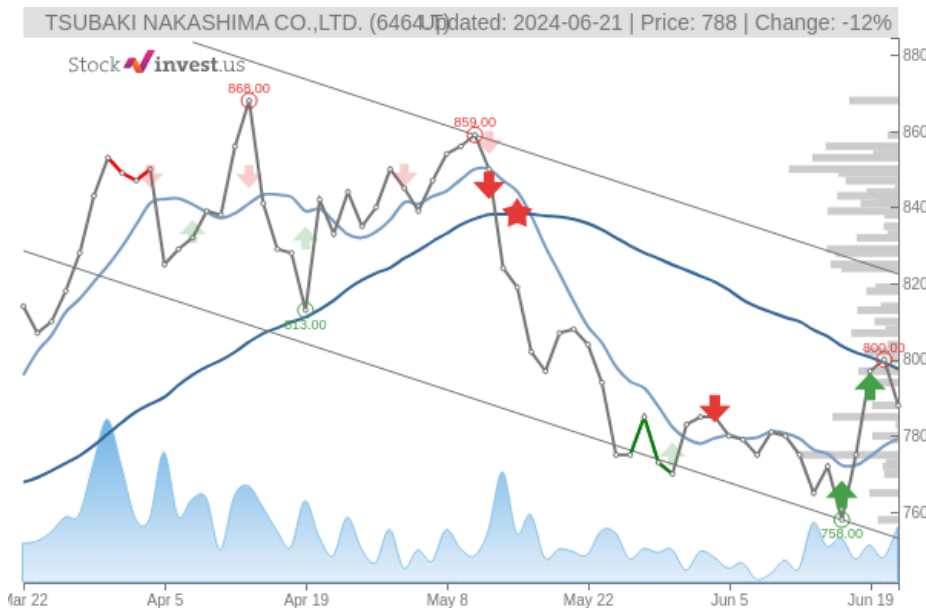


TSUBAKI NAKASHIMA CO.,LTD. (Fri, Jun 21, 2024)

Sell candidate since Jun 21, 2024

StockInvest.us
Gyneju st. 14, "ROCKIT"
Vilnius, LT-01109
Lithuania



score: **-4.47**
#24114/ 51325

Trend: Sell
MV Long: Sell
MV Short: Buy
Pivot: Sell
Volume: Buy
MACD: Buy

Tech commentaries:

The **TSUBAKI NAKASHIMA CO.,LTD.** stock price fell by **-1.50%** on the last day (Friday, 21st Jun 2024) from **JP¥800.00** to **JP¥788.00**. During the last trading day the stock fluctuated **2.41%** from a day low at **JP¥787.00** to a day high of **JP¥806.00**. The price has been going up and down for this period, and there has been a 1.68% gain for the last 2 weeks. Volume has increased on the last day by **135 thousand** shares but on falling prices. This may be an early warning and the risk will be increased slightly over the next couple of days. In total, **324 thousand** shares were bought and sold for approximately **JP¥255.00** million.

The stock lies in the middle of a falling trend in the short term and further fall within the trend is signaled. Given the current short-term trend, the stock is expected to fall **-8.40%** during the next 3 months and, with a 90% probability hold a price between **JP¥689.84** and **JP¥753.36** at the end of this 3-month period. Do note, that if the stock price manages to stay at current levels or higher, our prediction target will start to change positively over the next few days as the conditions for the current predictions will be broken.

There are mixed signals in the stock today. The **TSUBAKI NAKASHIMA CO.,LTD.** stock holds a buy signal from the short-term Moving Average; at the same time, however, the long-term average holds a general sell signal. Since the long-term average is above the short-term average there is a general sell signal in the stock giving a more negative forecast for the stock. On further gains, the stock will meet resistance from the long-term Moving Average at **JP¥797.60**. On a fall, the stock will find some support from the short-term average at **JP¥779.29**. A break-up through the long-term average will give another buy signal, while a fall below the short-term average will add another sell signal and strengthen the general signal. A sell signal was issued from a pivot top point on **Thursday, June 20, 2024**, and so far it has fallen -1.50%. Further fall is indicated until a new bottom pivot has been found. Volume rose on falling prices yesterday. This may be an early warning and the stock should be followed more closely. Furthermore, there is a buy signal from the 3 month Moving Average Convergence Divergence (MACD).

TSUBAKI NAKASHIMA CO.,LTD. finds support from accumulated volume at **JP¥785.00** and this level may hold a buying opportunity as an upwards reaction can be expected when the support is being tested. On the upside the stock meets some resistance from accumulated volume at **JP¥850.00**, **JP¥853.00** and **JP¥856.00**.

In general the stock tends to have very controlled movements and with good liquidity the risk is considered very low in this stock. During the last day, the stock moved **JP¥19.00** between high and low, or **2.41%**. For the last week the stock has had daily average volatility of **2.10%**.

TSUBAKI NAKASHIMA CO.,LTD. holds several negative signals and we believe that it will still perform weakly in the next couple of days or weeks. We, therefore, hold a negative evaluation of this stock. Due to some small weaknesses in the technical picture we have downgraded our analysis conclusion for this stock since the last evaluation from a Hold/Accumulate to a Sell candidate.

Risk: **Low**

Evaluation: **Sell Candidate**

Disclaimer: StockInvest.us is a research service that provides financial data and technical analysis of stocks. All users should speak with their financial advisor before buying or selling any securities. Users should not base their investment decision upon "StockInvest.us". By using the site you agree and are held liable for your own investment decisions and agree to Terms of Use and Privacy Policy.