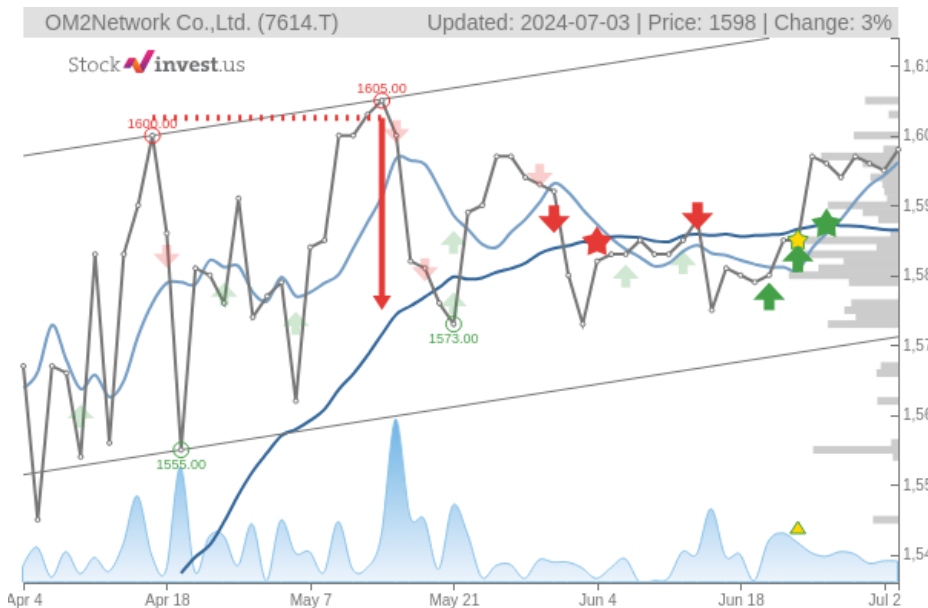


# OM2Network Co.,Ltd. (Wed, Jul 03, 2024)

Buy candidate since Jun 28, 2024

Gain 0.06%

StockInvest.us  
Gyneju st. 14, "ROCKIT"  
Vilnius, LT-01109  
Lithuania



score: **1.55**  
#5536/ 54198

Trend: **Hold**  
MV Long: **Buy**  
MV Short: **Buy**  
Pivot: **Buy**  
Volume: **Sell**  
MACD: **Buy**

## Tech commentaries:

The **OM2Network Co.,Ltd.** stock price gained **0.188%** on the last trading day (Wednesday, 3rd Jul 2024), rising from **JP¥1,595.00** to **JP¥1,598.00**. During the last trading day the stock fluctuated **0.251%** from a day low at **JP¥1,596.00** to a day high of **JP¥1,600.00**. The price has risen in 5 of the last 10 days and is up by **1.2%** over the past 2 weeks.

The stock is moving within a narrow and horizontal trend and further movements within this trend can be expected. Given the current horizontal trend, you can expect **OM2Network Co.,Ltd.** stock with a 90% probability to be traded between **JP¥1,590.61** and **JP¥1,636.83** at the end of this 3-month period. A break of a horizontal trend is often followed by a large increase in the volume, and stocks seldom manage to go directly from the bottom of a trend up to the top. Stocks turning up in the middle of a horizontal trend are therefore considered to be potential runners.

Mostly positive signals in the chart today. The **OM2Network Co.,Ltd.** stock holds buy signals from both short and long-term Moving Averages giving a positive forecast for the stock. Also, there is a general buy signal from the relation between the two signals where the short-term average is above the long-term average. On corrections down, there will be some support from the lines at **JP¥1,596.14** and **JP¥1,586.49**. A breakdown below any of these levels will issue sell signals. A buy signal was issued from a pivot bottom point on **Tuesday, May 21, 2024**, and so far it has risen 1.59%. Further rise is indicated until a new top pivot has been found. Furthermore, there is a buy signal from the 3 month Moving Average Convergence Divergence (MACD). Volume fell during the last trading day despite gaining prices. This causes a divergence between volume and price and it may be an early warning. The stock should be watched closely.

**OM2Network Co.,Ltd.** finds support from accumulated volume at **JP¥1,585.00** and this level may hold a buying opportunity as an upwards reaction can be expected when the support is being tested. On the upside the stock meets some resistance just above today's level from accumulated volume at **JP¥1,600.00**, **JP¥1,603.00** and **JP¥1,605.00**.

In general the stock tends to have very controlled movements and with good liquidity the risk is considered very low in this stock. During the last day, the stock moved **JP¥4.00** between high and low, or **0.251%**. For the last week the stock has had daily average volatility of **0.427%**.

Several short-term signals are positive and we conclude that the current level may hold a buying opportunity, as there is a fair chance for **OM2Network Co.,Ltd.** stock to perform well in the short-term period.

Risk: **Low**

Evaluation: **Buy Candidate**

Disclaimer: StockInvest.us is a research service that provides financial data and technical analysis of stocks. All users should speak with their financial advisor before buying or selling any securities. Users should not base their investment decision upon "StockInvest.us". By using the site you agree and are held liable for your own investment decisions and agree to Terms of Use and Privacy Policy.