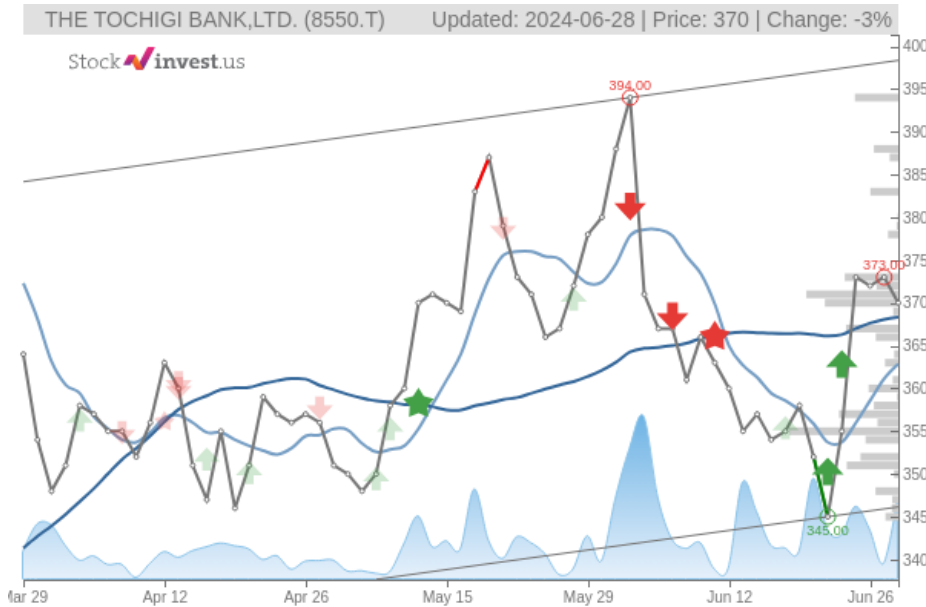


THE TOCHIGI BANK,LTD. (Fri, Jun 28, 2024)

Sell candidate since Jun 26, 2024 Loss -0.54%

StockInvest.us
Gyneju st. 14, "ROCKIT"
Vilnius, LT-01109
Lithuania



score: **-1.13**
#16357/ 54216

Trend: Buy
MV Long: Buy
MV Short: Buy
Pivot: Sell
Volume: Buy
MACD: Buy

Tech commentaries:

The **THE TOCHIGI BANK,LTD.** stock price fell by **-0.80%** on the last day (Friday, 28th Jun 2024) from **JP¥373.00** to **JP¥370.00**. During the last trading day the stock fluctuated **2.45%** from a day low at **JP¥368.00** to a day high of **JP¥377.00**. The price has been going up and down for this period, and there has been a 3.64% gain for the last 2 weeks. Volume has increased on the last day by **404 thousand** shares but on falling prices. This may be an early warning and the risk will be increased slightly over the next couple of days. In total, **582 thousand** shares were bought and sold for approximately **JP¥215.19** million.

The stock lies in the middle of a wide and weak rising trend in the short term and a further rise within the trend is signaled. Given the current short-term trend, the stock is expected to rise **3.69%** during the next 3 months and, with a 90% probability hold a price between **JP¥358.92** and **JP¥413.05** at the end of this 3-month period.

The **THE TOCHIGI BANK,LTD.** stock holds buy signals from both short and long-term Moving Averages giving a positive forecast for the stock, but the stock has a general sell signal from the relation between the two signals where the long-term average is above the short-term average. On corrections down, there will be some support from the lines at **JP¥362.86** and **JP¥368.34**. A breakdown below any of these levels will issue sell signals. Furthermore, there is a buy signal from the 3 month Moving Average Convergence Divergence (MACD). Some negative signals were issued as well, and these may have some influence on the near short-term development. A sell signal was issued from a pivot top point on **Thursday, June 27, 2024**, and so far it has fallen -0.80%. Further fall is indicated until a new bottom pivot has been found. Volume rose on falling prices yesterday. This may be an early warning and the stock should be followed more closely.

THE TOCHIGI BANK,LTD. finds support from accumulated volume at **JP¥367.00** and this level may hold a buying opportunity as an upwards reaction can be expected when the support is being tested. On the upside the stock meets some resistance just above today's level from accumulated volume at **JP¥371.00**, **JP¥373.00** and **JP¥394.00**.

This stock has average movements during the day and with good trading volume, the risk is considered to be medium. During the last day, the stock moved **JP¥9.00** between high and low, or **2.45%**. For the last week, the stock has had daily average volatility of **2.90%**.

THE TOCHIGI BANK,LTD. holds several negative signals and we believe that it will still perform weakly in the next couple of days or weeks. We, therefore, hold a negative evaluation of this stock.

Risk: **Medium**

Evaluation: **Sell Candidate**