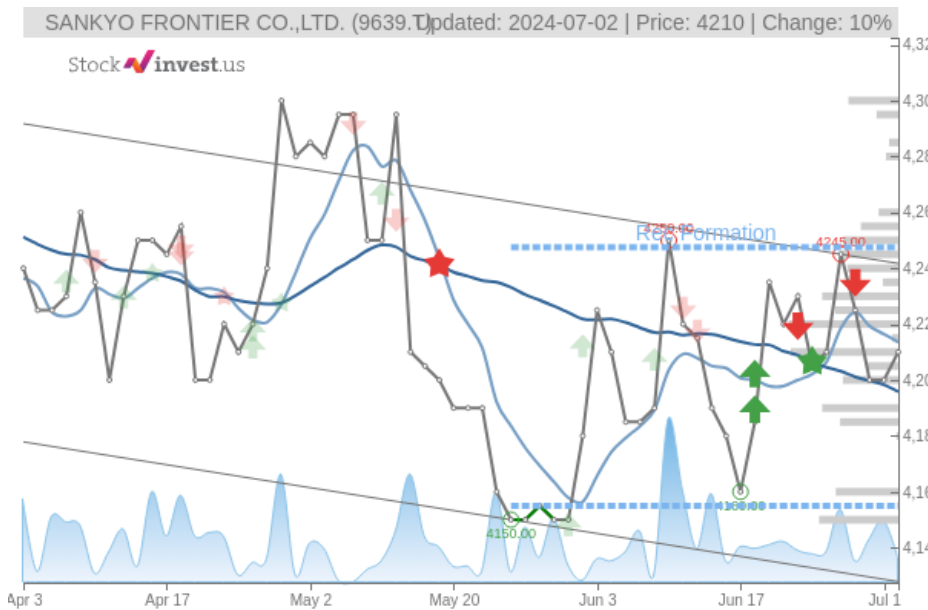


SANKYO FRONTIER CO.,LTD. (Tue, Jul 02, 2024)

Hold candidate since Jul 02, 2024

StockInvest.us
Gyneju st. 14, "ROCKIT"
Vilnius, LT-01109
Lithuania



score: **0.486**

#8136/ 54198

Trend: **Hold**
MV Long: **Buy**
MV Short: **Sell**
Pivot: **Sell**
Volume: **Sell**
MACD: **Sell**

Tech commentaries:

The **SANKYO FRONTIER CO.,LTD.** stock price gained **0.238%** on the last trading day (Tuesday, 2nd Jul 2024), rising from **JP¥4,200.00** to **JP¥4,210.00**. During the last trading day the stock fluctuated **0.238%** from a day low at **JP¥4,200.00** to a day high of **JP¥4,210.00**. The price has risen in 5 of the last 10 days and is up by **0.6%** over the past 2 weeks. Volume fell on the last day by **-2 thousand** shares and in total, **2 thousand** shares were bought and sold for approximately **JP¥6.74** million. You should take into consideration that falling volume on higher prices causes divergence and may be an early warning about possible changes over the next couple of days.

The stock is moving within a narrow and horizontal trend and further movements within this trend can be expected. Given the current horizontal trend, you can expect **SANKYO FRONTIER CO.,LTD.** stock with a 90% probability to be traded between **JP¥4,079.78** and **JP¥4,192.30** at the end of this 3-month period. A break of a horizontal trend is often followed by a large increase in the volume, and stocks seldom manage to go directly from the bottom of a trend up to the top. Stocks turning up in the middle of a horizontal trend are therefore considered to be potential runners. Do note, that if the stock price manages to stay at current levels or higher, our prediction target will start to change positively over the next few days as the conditions for the current predictions will be broken.

The **SANKYO FRONTIER CO.,LTD.** stock holds a sell signal from the short-term Moving Average; at the same time, however, there is a buy signal from the long-term average. Since the short-term average is above the long-term average there is a general buy signal in the stock giving a positive forecast for the stock. On further gains, the stock will meet resistance from the short-term Moving Average at approximately **JP¥4,213.57**. On a fall, the stock will find some support from the long-term average at approximately **JP¥4,195.86**. A break-up through the short-term average will send a buy signal, whereas a breakdown through the long-term average will send a sell signal. Volume fell during the last trading day despite gaining prices. This causes a divergence between volume and price and it may be an early warning. The stock should be watched closely. Some negative signals were issued as well, and these may have some influence on the near short-term development. A sell signal was issued from a pivot top point on **Wednesday, June 26, 2024**, and so far it has fallen **-0.82%**. Further fall is indicated until a new bottom pivot has been found. Furthermore, there is currently a sell signal from the 3 month Moving Average Convergence Divergence (MACD).

SANKYO FRONTIER CO.,LTD. finds support from accumulated volume at **JP¥4,200.00** and this level may hold a buying opportunity as an upwards reaction can be expected when the support is being tested. On the upside the stock meets some resistance just above today's level from accumulated volume at **JP¥4,220.00**, **JP¥4,230.00** and **JP¥4,250.00**.

In general the stock tends to have very controlled movements and with good liquidity the risk is considered very low in this stock. During the last day, the stock moved **JP¥10.00** between high and low, or **0.238%**. For the last week the stock has had daily average volatility of **0.594%**.

SANKYO FRONTIER CO.,LTD. holds several negative signals and this should be a sell candidate, but due to the general chance for a turnaround situation it should be considered as a hold candidate (hold or accumulate) in this position whilst awaiting

Disclaimer: StockInvest.us is a research service that provides financial data and technical analysis of stocks. All users should speak with their financial advisor before buying or selling any securities. Users should not base their investment decision upon "StockInvest.us". By using the site you agree and are held liable for your own investment decisions and agree to Terms of Use and Privacy Policy.

Risk: **Low**

Evaluation: **Hold/Accumulate**