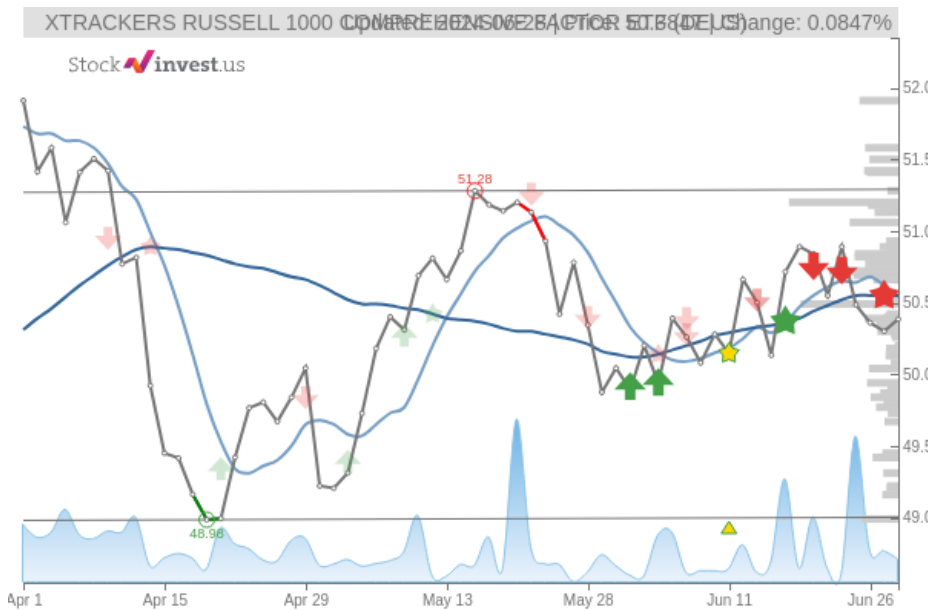


# XTRACKERS RUSSELL 1000 COMPREHENSIVE FACTOR ETF (Fri, Jun

Sell candidate since Jun 24, 2024 Loss -0.99%

StockInvest.us  
Gyneju st. 14, "ROCKIT"  
Vilnius, LT-01109  
Lithuania



score: **-1.70**

#16110/ 54216

Trend: Hold  
MV Long: Sell  
MV Short: Sell  
Pivot: Sell  
Volume: Sell  
MACD: Buy

## Tech commentaries:

The **XTRACKERS RUSSELL 1000 COMPREHENSIVE** ETF price gained **0.168%** on the last trading day (Friday, 28th Jun 2024), rising from **\$50.30** to **\$50.38**. During the last trading day the ETF fluctuated **0.617%** from a day low at **\$50.24** to a day high of **\$50.55**. The price has fallen in 6 of the last 10 days and is down by **-0.23%** for this period. Volume fell on the last day by **1 thousand** shares and in total, **5 thousand** shares were bought and sold for approximately **\$233.63** thousand. You should take into consideration that falling volume on higher prices causes divergence and may be an early warning about possible changes over the next couple of days.

The ETF is moving within a narrow and horizontal trend and further movements within this trend can be expected. Given the current horizontal trend, you can expect **XTRACKERS RUSSELL 1000 COMPREHENSIVE** ETF with a 90% probability to be traded between **\$49.02** and **\$51.31** at the end of this 3-month period. A break of a horizontal trend is often followed by a large increase in the volume, and ETFs seldom manage to go directly from the bottom of a trend up to the top. ETFs turning up in the middle of a horizontal trend are therefore considered to be potential runners.

Furthermore, there is a buy signal from the 3 month Moving Average Convergence Divergence (MACD). Some negative signals were issued as well, and these may have some influence on the near short-term development. The **XTRACKERS RUSSELL 1000 COMPREHENSIVE** ETF holds sell signals from both short and long-term Moving Averages giving a more negative forecast for the stock. Also, there is a general sell signal from the relation between the two signals where the long-term average is above the short-term average. On corrections up, there will be some resistance from the lines at **\$50.54** and **\$50.55**. A break-up above any of these levels will issue buy signals. A sell signal was issued from a pivot top point on **Wednesday, May 15, 2024**, and so far it has fallen **-1.75%**. Further fall is indicated until a new bottom pivot has been found. Volume fell during the last trading day while the price increased. This causes a divergence and may be considered as an early warning, but it may also not.

**XTRACKERS RUSSELL 1000 COMPREHENSIVE** finds support from accumulated volume at **\$50.04** and this level may hold a buying opportunity as an upwards reaction can be expected when the support is being tested. On the upside the ETF meets some resistance just above today's level from accumulated volume at **\$50.49**, **\$50.72** and **\$51.20**.

In general the ETF tends to have very controlled movements and therefore the general risk is considered very low. However, be aware of low or falling volume and make sure to keep an eye on the ETF During the last day, the ETF moved **\$0.310** between high and low, or **0.617%**. For the last week the ETF has had daily average volatility of **0.485%**

**XTRACKERS RUSSELL 1000 COMPREHENSIVE** holds several negative signals and is within a narrow and falling trend, so we believe it will still perform weakly in the next couple of days or weeks. We therefore hold a negative evaluation of this ETF.

Risk: **Low**

Evaluation: **Sell Candidate**

Disclaimer: StockInvest.us is a research service that provides financial data and technical analysis of stocks. All users should speak with their financial advisor before buying or selling any securities. Users should not base their investment decision upon "StockInvest.us". By using the site you agree and are held liable for your own investment decisions and agree to Terms of Use and Privacy Policy.