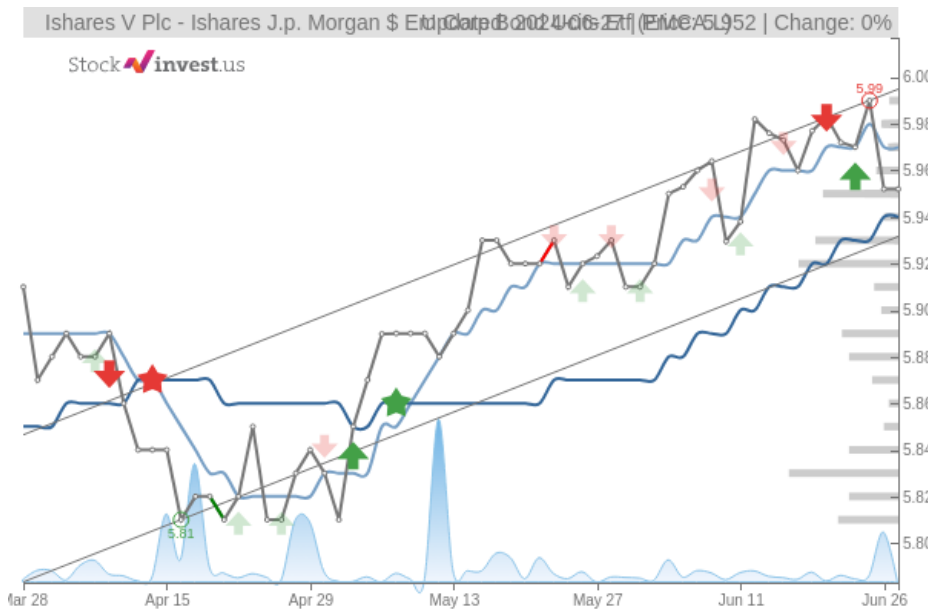


Ishares V Plc - Ishares J.p. Morgan \$ Em Corp Bond Ucits Etf (Thu, Jun

Buy candidate since Apr 26, 2024

Gain 2.09%

StockInvest.us
Gyneju st. 14, "ROCKIT"
Vilnius, LT-01109
Lithuania



score: **0.712**

#/ 54252

Trend: Buy
MV Long: Buy
MV Short: Sell
Pivot: Sell
Volume: Sell
MACD: Sell

Tech commentaries:

No changes to the price of **Ishares V Plc - Ishares J.p. Morgan \$ Em** ETF on the last trading day (Thursday, 27th Jun 2024). During the last trading day the ETF fluctuated **0%** from a day low at **\$5.95** to a day high of **\$5.95**. The price has fallen in 6 of the last 10 days and is down by **-0.5%** for this period.

The ETF lies in the middle of a narrow and weak rising trend in the short term and a further rise within the trend is signaled. Given the current short-term trend, the ETF is expected to rise **2.54%** during the next 3 months and, with a 90% probability hold a price between **\$6.08** and **\$6.15** at the end of this 3-month period.

The **Ishares V Plc - Ishares J.p. Morgan \$ Em** ETF holds a sell signal from the short-term Moving Average; at the same time, however, there is a buy signal from the long-term average. Since the short-term average is above the long-term average there is a general buy signal in the ETF giving a positive forecast for the stock. On further gains, the ETF will meet resistance from the short-term Moving Average at approximately **\$5.97**. On a fall, the ETF will find some support from the long-term average at approximately **\$5.94**. A break-up through the short-term average will send a buy signal, whereas a breakdown through the long-term average will send a sell signal. Some negative signals were issued as well, and these may have some influence on the near short-term development. A sell signal was issued from a pivot top point on **Tuesday, June 25, 2024**, and so far it has fallen - 0.634%. Further fall is indicated until a new bottom pivot has been found. Furthermore, there is currently a sell signal from the 3 month Moving Average Convergence Divergence (MACD). Volume fell on the last day without any changes to the price. This does not cause any direct divergence but may be an early warning and a possible "turning point". The very low volume increases the risk and reduces the other technical signals issued.

Ishares V Plc - Ishares J.p. Morgan \$ Em finds support from accumulated volume at **\$5.88** and this level may hold a buying opportunity as an upwards reaction can be expected when the support is being tested. On the upside the ETF meets some resistance just above today's level from accumulated volume at **\$5.96**, **\$5.98** and **\$5.98**.

In general the ETF tends to have very controlled movements and therefore the general risk is considered very low. However, be aware of low or falling volume and make sure to keep an eye on the ETF During the last day, the ETF moved **\$0** between high and low, or **0%**. For the last week the ETF has had daily average volatility of **0.380%**

Ishares V Plc - Ishares J.p. Morgan \$ Em holds several positive signals, but we still don't find these to be enough for a buy candidate. At the current level, it should be considered as a hold candidate (hold or accumulate) in this position whilst awaiting further development.

Risk: **Low**

Evaluation: **Hold/Accumulate**

Disclaimer: StockInvest.us is a research service that provides financial data and technical analysis of stocks. All users should speak with their financial advisor before buying or selling any securities. Users should not base their investment decision upon "StockInvest.us". By using the site you agree and are held liable for your own investment decisions and agree to Terms of Use and Privacy Policy.