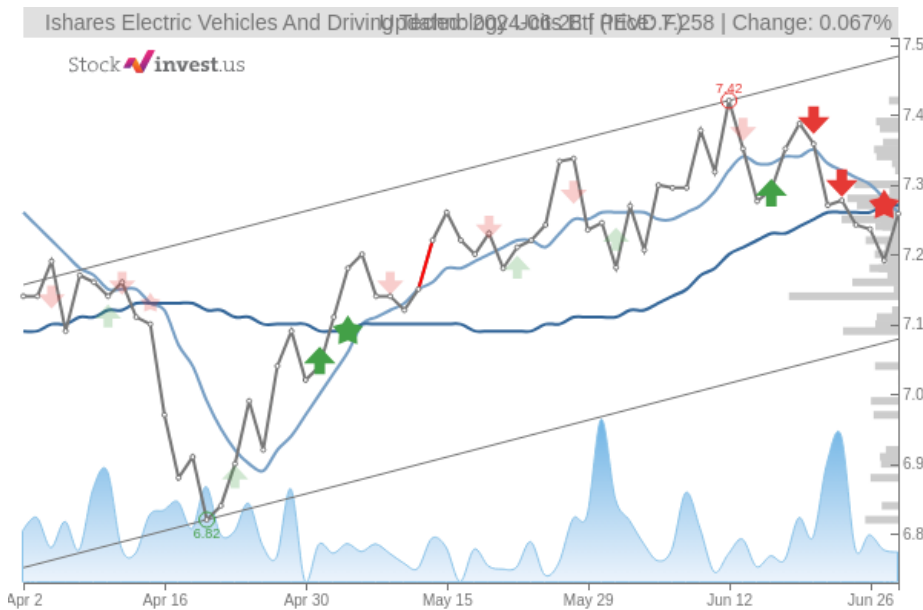


Ishares Electric Vehicles And Driving Technology Ucits Etf (Fri, Jun 28,

Sell candidate since Jun 28, 2024

StockInvest.us
Gyneju st. 14, "ROCKIT"
Vilnius, LT-01109
Lithuania



score: **-1.47**
#17597/ 54216

Trend: Buy
MV Long: Sell
MV Short: Sell
Pivot: Sell
Volume: Sell
MACD: Sell

Tech commentaries:

The **Ishares Electric Vehicles And Driving** ETF price gained **0.93%** on the last trading day (Friday, 28th Jun 2024), rising from **7.19€** to **7.26€**. During the last trading day the ETF fluctuated **0.83%** from a day low at **7.22€** to a day high of **7.28€**. The price has been going up and down for this period, and there has been a **-0.25%** loss for the last 2 weeks. Volume fell on the last day by **-2 thousand** shares and in total, **41 thousand** shares were bought and sold for approximately **297.09€** thousand. You should take into consideration that falling volume on higher prices causes divergence and may be an early warning about possible changes over the next couple of days.

The ETF lies in the middle of a weak rising trend in the short term and a further rise within the trend is signaled. Given the current short-term trend, the ETF is expected to rise **4.57%** during the next 3 months and, with a 90% probability hold a price between **7.40€** and **7.83€** at the end of this 3-month period.

There are few to no technical positive signals at the moment. The **Ishares Electric Vehicles And Driving** ETF holds sell signals from both short and long-term Moving Averages giving a more negative forecast for the stock. Also, there is a general sell signal from the relation between the two signals where the long-term average is above the short-term average. On corrections up, there will be some resistance from the lines at **7.26€** and **7.27€**. A break-up above any of these levels will issue buy signals. A sell signal was issued from a pivot top point on **Wednesday, June 12, 2024**, and so far it has fallen **-2.18%**. Further fall is indicated until a new bottom pivot has been found. Furthermore, there is currently a sell signal from the 3 month Moving Average Convergence Divergence (MACD). Volume fell during the last trading day while the price increased. This causes a divergence and may be considered as an early warning, but it may also not.

Ishares Electric Vehicles And Driving finds support from accumulated volume at **7.25€** and this level may hold a buying opportunity as an upwards reaction can be expected when the support is being tested. On the upside the ETF meets some resistance just above today's level from accumulated volume at **7.27€**, **7.28€** and **7.30€**.

In general the ETF tends to have very controlled movements and therefore the general risk is considered very low. However, be aware of low or falling volume and make sure to keep an eye on the ETF. During the last day, the ETF moved **0.0600€** between high and low, or **0.83%**. For the last week the ETF has had daily average volatility of **1.08%**.

The Ishares Electric Vehicles And Driving ETF holds several negative signals and despite the positive trend, we believe **Ishares Electric Vehicles And Driving** will perform weakly in the next couple of days or weeks. Therefore, we hold a negative evaluation of this ETF. Due to some small weaknesses in the technical picture we have downgraded our analysis conclusion for this ETF since the last evaluation from a Hold/Accumulate to a Sell candidate.

Risk: **Low**

Evaluation: **Sell Candidate**

Disclaimer: StockInvest.us is a research service that provides financial data and technical analysis of stocks. All users should speak with their financial advisor before buying or selling any securities. Users should not base their investment decision upon "StockInvest.us". By using the site you agree and are held liable for your own investment decisions and agree to Terms of Use and Privacy Policy.