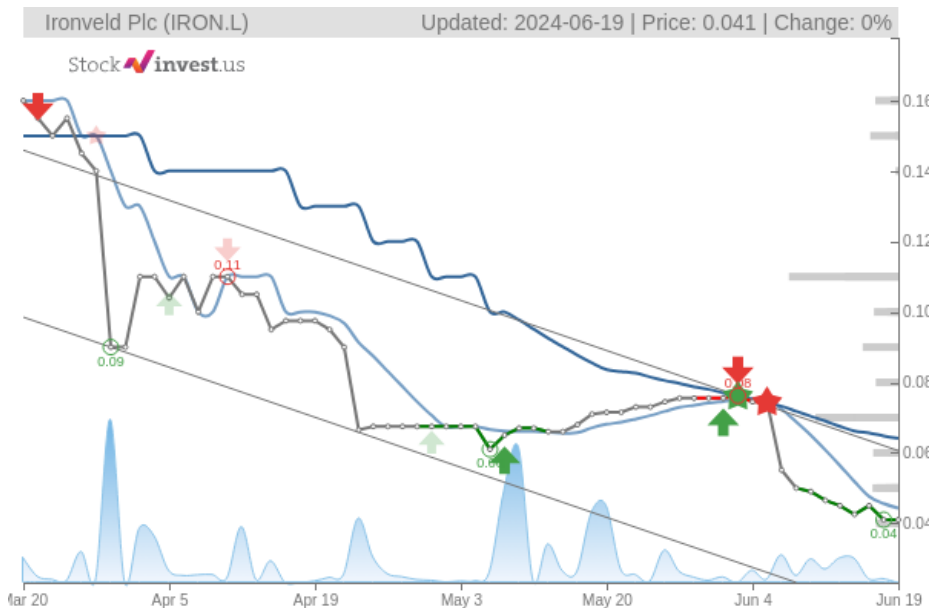


Ironveld Plc (Wed, Jun 19, 2024)

Sell candidate since Jun 04, 2024

Loss -44.97%

StockInvest.us
Gyneju st. 14, "ROCKIT"
Vilnius, LT-01109
Lithuania



score: **-3.60**
#/ 52282

Trend: Sell
MV Long: Sell
MV Short: Sell
Pivot: Buy
Volume: Sell
MACD: Sell

Tech commentaries:

No changes to the price of **Ironveld Plc** stock on the last trading day (Wednesday, 19th Jun 2024). During the last trading day the stock fluctuated **0%** from a day low at **£0.0410** to a day high of **£0.0410**. The price has fallen in 7 of the last 10 days and is down by **-44.97%** for this period.

The stock lies in the middle of a very wide and falling trend in the short term and further fall within the trend is signaled. Given the current short-term trend, the stock is expected to fall **-53.56%** during the next 3 months and, with a 90% probability hold a price between **£0.0061** and **£0.0343** at the end of this 3-month period. Do note, that if the stock price manages to stay at current levels or higher, our prediction target will start to change positively over the next few days as the conditions for the current predictions will be broken.

A buy signal was issued from a pivot bottom point on **Tuesday, June 18, 2024**, and so far it has fallen 0%. Further rise is indicated until a new top pivot has been found. Some negative signals were issued as well, and these may have some influence on the near short-term development. The **Ironveld Plc** stock holds sell signals from both short and long-term Moving Averages giving a more negative forecast for the stock. Also, there is a general sell signal from the relation between the two signals where the long-term average is above the short-term average. On corrections up, there will be some resistance from the lines at **£0.0443** and **£0.0641**. A break-up above any of these levels will issue buy signals. Furthermore, there is currently a sell signal from the 3 month Moving Average Convergence Divergence (MACD). Volume fell on the last day without any changes to the price. This does not cause any direct divergence but may be an early warning and a possible "turning point". The very low volume increases the risk and reduces the other technical signals issued.

There is no support from accumulated volume below today's level and given the right condition the stock may perform very badly in the next couple of days. On the upside the stock meets some resistance just above today's level from accumulated volume at **£0.0425**, **£0.0450** and **£0.0490**.

In general the stock tends to have very controlled movements and therefore the general risk is considered very low. However, be aware of low or falling volume and make sure to keep an eye on the stock During the last day, the stock moved **£0** between high and low, or **0%**. For the last week the stock has had daily average volatility of **6.79%**

Ironveld Plc holds several negative signals and is within a very wide and falling trend, so we believe it will still perform weakly in the next couple of days or weeks. We therefore hold a negative evaluation of this stock.

Risk: **Low**

Evaluation: **Sell Candidate**

Disclaimer: StockInvest.us is a research service that provides financial data and technical analysis of stocks. All users should speak with their financial advisor before buying or selling any securities. Users should not base their investment decision upon "StockInvest.us". By using the site you agree and are held liable for your own investment decisions and agree to Terms of Use and Privacy Policy.