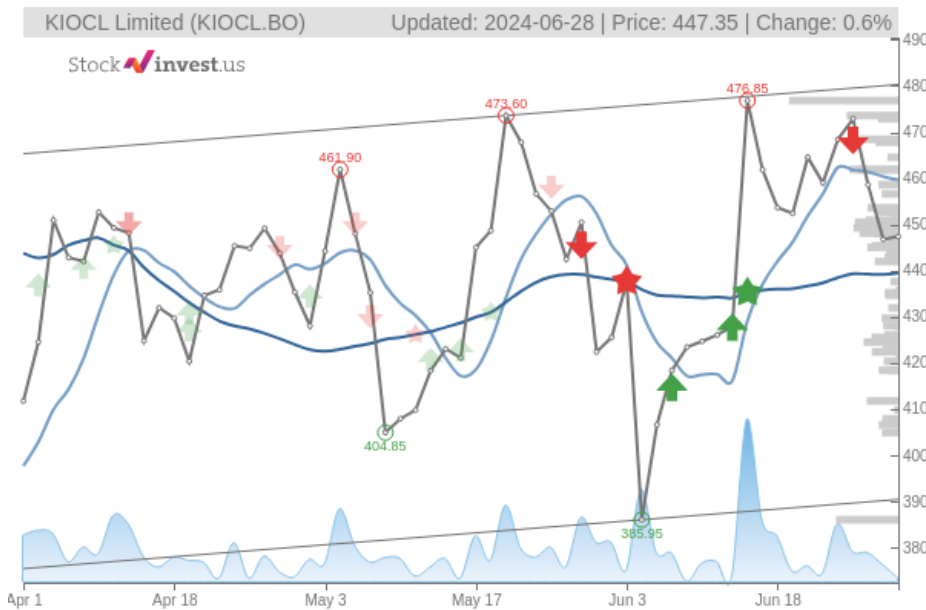


KIOCL Limited (Fri, Jun 28, 2024)

Sell candidate since Jun 28, 2024

StockInvest.us
Gyneju st. 14, "ROCKIT"
Vilnius, LT-01109
Lithuania



score: **-1.12**
#16317/ 54216

Trend: Buy
MV Long: Buy
MV Short: Sell
Pivot: Sell
Volume: Sell
MACD: Buy

Tech commentaries:

The **KIOCL Limited** stock price gained **0.134%** on the last trading day (Friday, 28th Jun 2024), rising from **?446.75** to **?447.35**. During the last trading day the stock fluctuated **2.30%** from a day low at **?443.85** to a day high of **?454.05**. The price has fallen in 6 of the last 10 days and is down by **-6.19%** for this period. Volume fell on the last day by **-10 thousand** shares and in total, **9** thousand shares were bought and sold for approximately **?3.82** million. You should take into consideration that falling volume on higher prices causes divergence and may be an early warning about possible changes over the next couple of days.

The stock lies in the middle of a wide and weak rising trend in the short term and a further rise within the trend is signaled. Given the current short-term trend, the stock is expected to rise **3.23%** during the next 3 months and, with a 90% probability hold a price between **?402.94** and **?495.82** at the end of this 3-month period.

The **KIOCL Limited** stock holds a sell signal from the short-term Moving Average; at the same time, however, there is a buy signal from the long-term average. Since the short-term average is above the long-term average there is a general buy signal in the stock giving a positive forecast for the stock. On further gains, the stock will meet resistance from the short-term Moving Average at approximately **?459.66**. On a fall, the stock will find some support from the long-term average at approximately **?439.51**. A break-up through the short-term average will send a buy signal, whereas a breakdown through the long-term average will send a sell signal. Furthermore, there is a buy signal from the 3 month Moving Average Convergence Divergence (MACD). Volume fell during the last trading day despite gaining prices. This causes a divergence between volume and price and it may be an early warning. The stock should be watched closely. Some negative signals were issued as well, and these may have some influence on the near short-term development. A sell signal was issued from a pivot top point on **Thursday, June 13, 2024**, and so far it has fallen -6.19%. Further fall is indicated until a new bottom pivot has been found.

On the downside, the stock finds support just below today's level from accumulated volume at **?424.50** and **?411.70**. On the upside the stock meets some resistance just above today's level from accumulated volume at **?461.90**, **?473.60** and **?476.85**.

This stock has average movements during the day and with good trading volume, the risk is considered to be medium. During the last day, the stock moved **?10.20** between high and low, or **2.30%**. For the last week, the stock has had daily average volatility of **5.41%**.

KIOCL Limited holds several negative signals and we believe that it will still perform weakly in the next couple of days or weeks. We, therefore, hold a negative evaluation of this stock. Due to some small weaknesses in the technical picture we have downgraded our analysis conclusion for this stock since the last evaluation from a Hold/Accumulate to a Sell candidate.

Risk: Medium

Evaluation: Sell Candidate

Disclaimer: StockInvest.us is a research service that provides financial data and technical analysis of stocks. All users should speak with their financial advisor before buying or selling any securities. Users should not base their investment decision upon "StockInvest.us". By using the site you agree and are held liable for your own investment decisions and agree to Terms of Use and Privacy Policy.