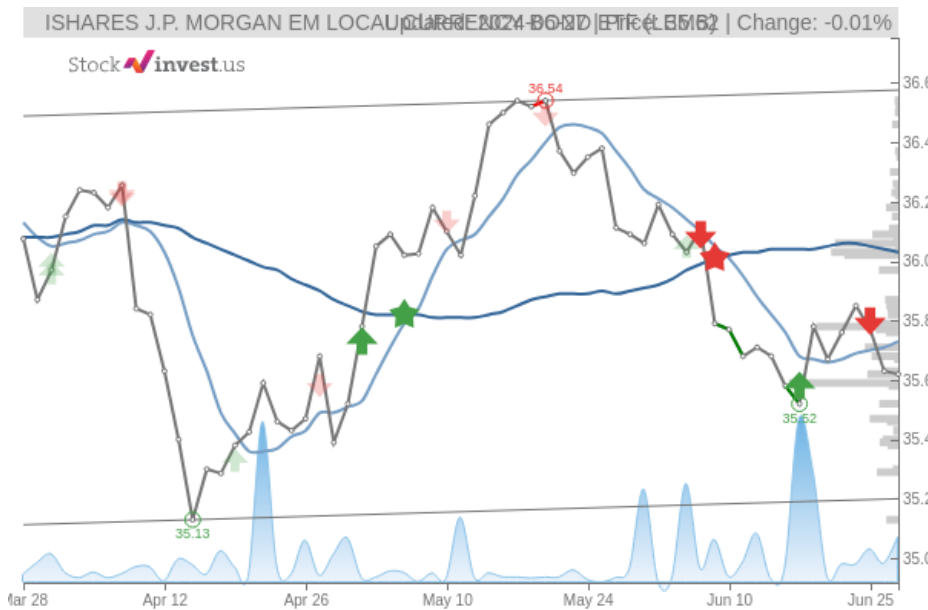


# ISHARES J.P. MORGAN EM LOCAL CURRENCY BOND ETF (Thu, Jun

Sell candidate since Jun 25, 2024 Loss -0.42%

StockInvest.us  
Gyneju st. 14, "ROCKIT"  
Vilnius, LT-01109  
Lithuania



score: **-1.16**  
#14445/ 54252

Trend: Hold  
MV Long: Sell  
MV Short: Sell  
Pivot: Buy  
Volume: Buy  
MACD: Buy

## Tech commentaries:

The **ISHARES J.P. MORGAN EM LOCAL CURRENCY** ETF price fell by **-0.0281%** on the last day (Thursday, 27th Jun 2024) from **\$35.63** to **\$35.62**. It has now fallen 3 days in a row. During the last trading day the ETF fluctuated **0.344%** from a day low at **\$35.54** to a day high of **\$35.66**. The price has fallen in 7 of the last 10 days and is down by **-0.25%** for this period. Volume has increased on the last day by **68 thousand** shares but on falling prices. This may be an early warning and the risk will be increased slightly over the next couple of days. In total, **128 thousand** shares were bought and sold for approximately **\$4.56** million.

The ETF is moving within a narrow and horizontal trend and further movements within this trend can be expected. Given the current horizontal trend, you can expect **ISHARES J.P. MORGAN EM LOCAL CURRENCY** ETF with a 90% probability to be traded between **\$35.29** and **\$36.66** at the end of this 3-month period. A break of a horizontal trend is often followed by a large increase in the volume, and ETFs seldom manage to go directly from the bottom of a trend up to the top. ETFs turning up in the middle of a horizontal trend are therefore considered to be potential runners.

A buy signal was issued from a pivot bottom point on **Monday, June 17, 2024**, and so far it has risen 0.282%. Further rise is indicated until a new top pivot has been found. Furthermore, there is a buy signal from the 3 month Moving Average Convergence Divergence (MACD). Some negative signals were issued as well, and these may have some influence on the near short-term development. The **ISHARES J.P. MORGAN EM LOCAL CURRENCY** ETF holds sell signals from both short and long-term Moving Averages giving a more negative forecast for the stock. Also, there is a general sell signal from the relation between the two signals where the long-term average is above the short-term average. On corrections up, there will be some resistance from the lines at **\$35.73** and **\$36.03**. A break-up above any of these levels will issue buy signals. Volume rose on falling prices yesterday. This may be an early warning and the ETF should be followed more closely.

**ISHARES J.P. MORGAN EM LOCAL CURRENCY** finds support from accumulated volume at **\$35.59** and this level may hold a buying opportunity as an upwards reaction can be expected when the support is being tested. On the upside the ETF meets some resistance just above today's level from accumulated volume at **\$35.78**, **\$36.03** and **\$36.06**.

In general the ETF tends to have very controlled movements and with good liquidity the risk is considered very low in this stock. During the last day, the ETF moved **\$0.122** between high and low, or **0.344%**. For the last week the ETF has had daily average volatility of **0.300%**.

**ISHARES J.P. MORGAN EM LOCAL CURRENCY** holds several negative signals and is within a narrow and falling trend, so we believe it will still perform weakly in the next couple of days or weeks. We therefore hold a negative evaluation of this ETF.

Risk: **Low**

Evaluation: **Sell Candidate**

Disclaimer: StockInvest.us is a research service that provides financial data and technical analysis of stocks. All users should speak with their financial advisor before buying or selling any securities. Users should not base their investment decision upon "StockInvest.us". By using the site you agree and are held liable for your own investment decisions and agree to Terms of Use and Privacy Policy.