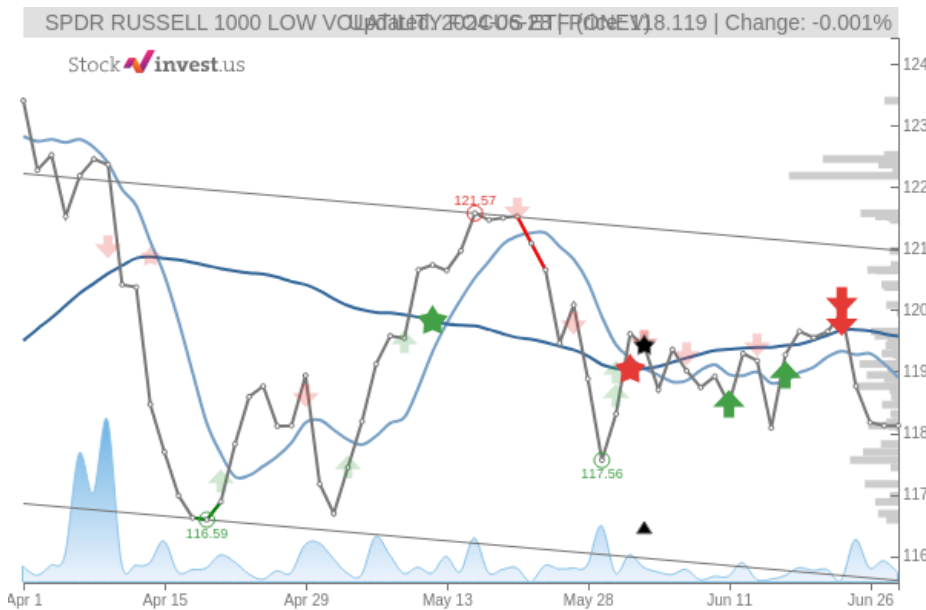


# SPDR RUSSELL 1000 LOW VOLATILITY FOCUS ETF (Fri, Jun 28, 2024)

Hold candidate since Jun 28, 2024

StockInvest.us  
Gyneju st. 14, "ROCKIT"  
Vilnius, LT-01109  
Lithuania



score: **-1.00**  
#15924/ 54216

Trend: **Hold**  
MV Long: **Sell**  
MV Short: **Sell**  
Pivot: **Buy**  
Volume: **Sell**  
MACD: **Buy**

## Tech commentaries:

The **SPDR RUSSELL 1000 LOW VOLATILITY FOCUS** ETF price fell by **-0.0008%** on the last day (Friday, 28th Jun 2024) from **\$118.12** to **\$118.12**. It has now fallen 4 days in a row. During the last trading day the ETF fluctuated **0.553%** from a day low at **\$117.87** to a day high of **\$118.53**. The price has fallen in 6 of the last 10 days and is down by **-0.88%** for this period. Volume fell on the last day along with the ETF, which is actually a good sign as volume should follow the ETF. On the last day, the trading volume fell by **-4 thousand** shares and in total, **5 thousand** shares were bought and sold for approximately **\$633.71** thousand.

The ETF is moving within a narrow and horizontal trend and further movements within this trend can be expected. Given the current horizontal trend, you can expect **SPDR RUSSELL 1000 LOW VOLATILITY FOCUS** ETF with a 90% probability to be traded between \$114.42 and \$119.73 at the end of this 3-month period. A break of a horizontal trend is often followed by a large increase in the volume, and ETFs seldom manage to go directly from the bottom of a trend up to the top. ETFs turning up in the middle of a horizontal trend are therefore considered to be potential runners.

There are mixed signals in the ETF today. The **SPDR RUSSELL 1000 LOW VOLATILITY FOCUS** ETF holds sell signals from both short and long-term Moving Averages giving a more negative forecast for the stock. Also, there is a general sell signal from the relation between the two signals where the long-term average is above the short-term average. On corrections up, there will be some resistance from the lines at **\$118.90** and **\$119.57**. A break-up above any of these levels will issue buy signals. Volume fell along with the price during the last trading day, which is technical positive. One should, however, note that this ETF may have low liquidity in periods, which increases the general risk. A buy signal was issued from a pivot bottom point on **Wednesday, May 29, 2024**, and so far it has risen 0.477%. Further rise is indicated until a new top pivot has been found. Furthermore, there is a buy signal from the 3 month Moving Average Convergence Divergence (MACD).

**SPDR RUSSELL 1000 LOW VOLATILITY FOCUS** finds support from accumulated volume at \$117.69 and this level may hold a buying opportunity as an upwards reaction can be expected when the support is being tested. On the upside the ETF meets some resistance just above today's level from accumulated volume at **\$122.18**, **\$122.36** and **\$122.45**.

In general the ETF tends to have very controlled movements and therefore the general risk is considered very low. However, be aware of low or falling volume and make sure to keep an eye on the ETF. During the last day, the ETF moved **\$0.652** between high and low, or **0.553%**. For the last week the ETF has had daily average volatility of **0.607%**

**SPDR RUSSELL 1000 LOW VOLATILITY FOCUS** holds several positive signals, but we still don't find these to be enough for a buy candidate. At the current level, it should be considered as a hold candidate (hold or accumulate) in this position whilst awaiting further development. We have upgraded our analysis conclusion for this ETF since the last evaluation from a Sell to a Hold/Accumulate candidate.

Risk: **Low**

Evaluation: **Hold/Accumulate**

Disclaimer: StockInvest.us is a research service that provides financial data and technical analysis of stocks. All users should speak with their financial advisor before buying or selling any securities. Users should not base their investment decision upon "StockInvest.us". By using the site you agree and are held liable for your own investment decisions and agree to Terms of Use and Privacy Policy.